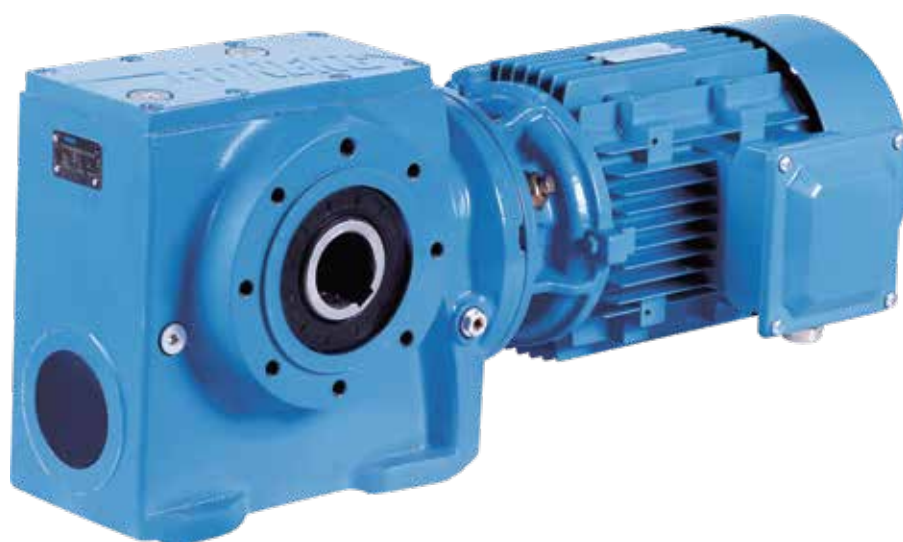


BONENG

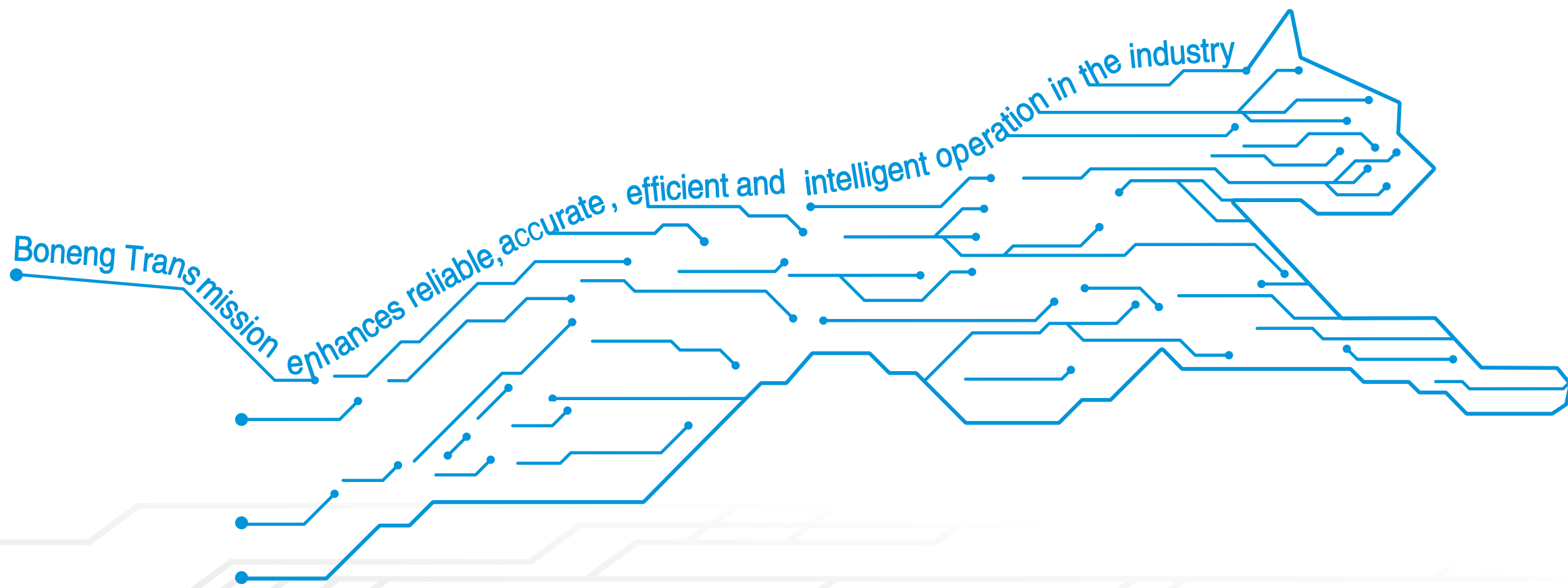


**S斜齿-蜗轮
齿轮马达**

**S Helical-Worm
Gearmotor**

Modified date 07/2024
Selection Sample C05.0027

Boneng Transmission



控制器/驱动器/马达/
齿轮马达/齿轮箱

Controller/ Drive/ Motor/
Gearmotor/ Gearbox

S斜齿-蜗轮齿轮马达

- ◆ 灵活多变的模块化理念设计的低齿隙齿轮马达。
- ◆ 拟生态外观设计，为您的品牌形象添彩。
- ◆ 更大的速比覆盖范围，满足更小和更大速比传动要求，应用场合更加广泛。
- ◆ 有限元优化铸造箱体，提高30%的运行稳定性，有效降低整机噪音。
- ◆ 大模数齿轮设计和增强型轴承配置保证产品更高的可靠性和更长的使用寿命。
- ◆ 高达94%的模块化设计，便于当地组装生产，更加快捷的生产和物流周期。
- ◆ 更高的功率密度可为您节省设备安装空间，整体结构更加紧密。
- ◆ 高可靠性和长设计寿命可有效降低您的使用成本及维护成本。
- ◆ 多种输出及布置形式可满足400多种安装使用方式。

S Helical-Worm Gearmotor

- ◆ Low backlash gearmotor designed with flexible and modular concept.
- ◆ Excellent ecological design adds luster to your brand image.
- ◆ Larger speed ratio coverage, meeting smaller and larger speed ratio transmission requirements, and wider application scenarios.
- ◆ The FEA design of the casting housing, which improves the running stability by 30% and effectively reduces the noise of the whole machine.
- ◆ The large-modulus gear design and enhanced bearing arrangement ensure higher reliability and longer service life.
- ◆ Up to 94% modular design, international production, faster production and logistics cycles.
- ◆ Higher power density can save you mounting space and the overall structure is more compact.
- ◆ High reliability and long design life can effectively reduce your use and maintenance costs.
- ◆ A variety of output and assemblies can meet more than 400 mounting cases.



产品广泛应用于物流、环保、橡胶、包装、造纸、纺织等各个领域。博能传动公司总部和各大区域的技术专家以及各区域办事处的应用工程师、售后服务技师竭诚为您提供全面的技术咨询和完善的服务。

Products are widely used in Logistics, Environmental protection, Rubber, Packaging, Paper, Textile and other fields.

Boneng Transmission company headquarters and major regional technical experts and regional offices of the application engineers, after-sales service technicians dedicated to provide you with comprehensive technical advice and perfect service.

注意事项：

- ◆ 样本中的结构示意图、外形图及其他附图只属范例，无严格比例要求。（未注尺寸单位均为mm）。
- ◆ 所注重量仅为平均值，并不具有约束力。

⚠️ 必须严格遵守以下各项：

- ◆ 为防止意外事故发生，所有旋转部件均按照使用者所在国家和地区的安全规范由购置方加罩保护。
- ◆ 试车之前必须认真阅读使用说明书。
- ◆ 齿轮马达在供货时已处于准运行状态，运行前需加注润滑油。
- ◆ 本样本中注油量只作为参考值，实际注油量应以油镜上的标记为准。
- ◆ 润滑油粘度应按齿轮马达使用工况及使用环境温度选取。
- ◆ 推荐采用知名品牌的润滑油。

Note:

- ◆ The structure scheme, appearance diagram and other attached diagrams in sample are examples, there is no strict proportion requirement. (The unmarked dimension units are mm).
- ◆ The marked weight is average value, it has no constraint force.

⚠️ You must conform to the following instructions:

- ◆ To prevent accidents, all the rotation parts are added with protective covers according to the safety regulations of the nation and region.
- ◆ Before debugging, you should carefully read instruction book.
- ◆ Gearbox is on running-permission status when delivered, you should add lubrication oil before putting it into running.
- ◆ The marked oil quantity in sample is only reference value, actual oil filling quantity should be the same with the mark on oil immersion lens.
- ◆ Lubrication oil viscosity should be selected according to working situation and application environment temperature of gearmotor.
- ◆ You can only apply lubrication oil of internationally famous brand.

目录

Catalogue

01.型号表示方法	01	01.Type Designation	01
02.安装方位	03	02.Mounting Positions	03
03.选型及举例		03.Type Selection and	
.....	05	Example	05
04.传动能力表	11	04.Transmission Capacity	11
05.允许的径向力	15	05.Permissible Radial Force	15
06.外形尺寸图表	17	06.Dimensions	17
07.输入法兰和输入轴		07.Input Flange and	
.....	35	Input shaft	35
08.外形尺寸图 (附表) ..	40	08.Dimensions	40
09.组合型尺寸图表	41	09.Combi-type Dimensions	41
10.马达防雨罩尺寸		10.Motor Rainproof	
.....	41	Cover Dimensions	41
11.被驱动轴推荐尺寸		11.Recommended Dimensions	
.....		for Driven Equipment	
.....	42	Shaft	42
12.轴端中心孔	44	12.Shaft End Centre Hole	44
13.平键与键槽的尺寸		13.Dimension of Parallel Key	
.....	45	and Keyway	45
14.逆止器与齿轮马达输出		14.Comparison table of	
旋向对照表		backstop and motor output	
.....	46	rotation direction	46
15.润滑油	46	15.Oil	46

1 型号表示方法

1 Type Designation

系列名

传动级数

2级

机座号

安装形式

H=底脚安装

F=法兰安装

S=小法兰安装

A=轴装式安装

T=带扭力臂附件安装

输出形式

A/B/D/E=单向平键实心轴

C/F=双向平键实心轴

G/H=平键空心轴

I/J=锁紧盘空心轴

K/L=渐开线花键空心轴

公称减速比代号

安装方位

D1/D2/D3/D4/D5/D6

可选附件和指定配置

0=无 6=补偿油箱

润滑油代号

0=不加润滑油(不加油出厂时, 请选此项)

4=矿物润滑油VG680(环境温度为-20°C~+40°C, 需加油出厂时, 请选此项)

Series

Stages

2-stage

Size

Mounting Mode

H=Horizontal foot-mounted

F=Flange-mounted

S=Short flange-mounted

A=Torque arm-mounted

T=Torque arm-mounted with accessory

Output Mode

A/B/D/E=Unidirectional output shaft

C/F=Bidirectional output shaft

G/H=Hollow shaft with parallel key

I/J=Hollow shaft with shrink disk

K/L=Hollow shaft with involute spline

Nominal Ratio Code

Mounting Positions

D1/D2/D3/D4/D5/D6

Accessories and Specific Configuration

0=None 6=Oil compensating tank

Oil Code

0=Without oil filling(Please select this option when you do not need lubricating oil)

4=With mineral oil VG680(Please select this option when the ambient temperature is -20°C~+40°C, and you need lubricating oil)

注¹⁾ 马达系列/机座号/极数/功率代号

Note¹⁾ Motor Type/Frame Size/Poles/Power Code

功率 kW	4极规格	6极规格	功率 kW	4极规格	6极规格	功率 kW	4极规格	6极规格	功率 kW	4极规格	6极规格
Power KW	4-pole Type	6-pole Type	Power KW	4-pole Type	6-pole Type	Power KW	4-pole Type	6-pole Type	Power KW	4-pole Type	6-pole Type
0.09	MS056M4A09		1.1	MS090S4B11 MH090S4B11 MP090S4B11 MA090M4B11	MH090S6B11 MP090M6B11	11	MH160S4C11 MP160M4C11 MA160M4C11	MH160M6C11 MP160M6C11	55	MH250M4C55 MP250M4C55 MA250M4C55	MH280M6C55 MP280M6C55
0.12	MH063M4A12 MP063M4A12 MA063M4A12		1.5	MS090S4B15 MH090S4B15 MP090M4B15 MA090M4B15	MH100M6B15 MP100M6B15	15	MH160M4C15 MP160L4C15 MA160L4C15	MH180M6C15 MP180M6C15	75	MH280S4C75 MP280S4C75 MA280S4C75	MH315S6C75 MP315S6C75
0.18	MH063M4A18 MP063M4A18 MA063M4A18	MH071M6A18 MP071M6A18	2.2	MS100M4B22 MH100M4B22 MP100M4B22 MA100M4B22	MH112M6B22 MP112M6B22	18.5	MH180M4C18 MP180M4C18 MA180M4C18	MH200M6C18 MP200M6C18	90	MH280M4C90 MP280M4C90 MA280M4C90	MH315M6C90 MP315M6C90
0.25	MH071M4A25 MP071M4A25 MA071M4A25	MH071M6A25 MP071M6A25	3	MS100M4B30 MH100M4B30 MP100M4B30 MA100M4B30	MH132S6B30 MP132S6B30	22	MH180L4C22 MP180L4C22 MA180L4C22	MH200M6C22 MP200M6C22	110	MH315S4D11 MP315S4D11	MH315L6D11
0.37	MH071M4A37 MP071M4A37 MA071M4A37	MH080M6A37 MP080M6A37	4	MS112M4B40 MH112L4B40 MP112L4B40 MA112L4B40	MH132M6B40 MP132S6B40	30	MH200M4C30 MP200M4C30 MA200M4C30	MH225M6C30 MP225M6C30	132	MH315M4D13 MP315M4D13	MH315L6D13
0.55	MS080M4A55 MH080M4A55 MP080M4A55 MA080M4A55	MH080M6A55 MP080M6A55	5.5	MS132S4B55 MH132S4B55 MP132M4B55 MA132L4B55	MH132M6B55 MP132M6B55	37	MH225M4C37 MP225M4C37 MA225M4C37	MH250M6C37 MP250M6C37	160	MH315L4D16 MP315L4D16	
0.75	MS080M4A75 MH080M4A75 MP080M4A75 MA080M4A75	MH090S6A75 MP090S6A75	7.5	MS132M4B75 MH132M4B75 MP132L4B75 MA132L4B75	MH160S6B75 MP160S6B75	45	MH225M4C45 MP225M4C45 MA225M4C45	MH280S6C45 MP280S6C45	200	MH315L4D20 MP315L4D20	

MH 132S 4 B55 A C 3 - A 0 B 1 0 - 0 1 1

进线孔位置

1/2/3/4

进线盒位置

1/2/3/4

马达安装方位0

马达防护

0=标准配置
1=带防雨罩
J=带金属接头
4=IP65(金属接头(制动器和风机防护IP55))
K=带金属接头和防雨罩
5=IP65(金属接头和带防雨罩(制动器和风机防护IP55))

热保护和加热保护

0=无热保护和加热保护
1=热敏电阻
2=热敏开关
3=PT100温度传感器
4=加热带
5=热敏电阻和加热带
6=热敏开关和加热带
7=PT100温度传感器和加热带

制动器

N=无制动器
A=制动器220-240VAC
B=制动器380-415VAC
D=带手柄制动器220-240VAC
E=带手柄制动器380-415VAC
R=带手柄双制动器220-240VAC
S=带手柄双制动器380-415VAC

编码器

0=无编码器
1=配编码器E25A
2=标配编码器附件
3=配编码器E25B
4=配编码器E25C

冷却方式

A=自扇冷却
F=强冷风机

频率/电压代号

1=50Hz 220V△/380VY
2=50Hz 230V△/400VY
3=50Hz 380V△/660VY
4=50Hz 400V△/690VY
5=60Hz 440V△
6=60Hz 460V△
7=60Hz 440VY
8=60Hz 460VY
C=60Hz 480VY
D=60Hz 480V△
B=50Hz 415V△
A=50Hz 240V△/415VY
E=60Hz 220V△/380VY
F=60Hz 380V△
G=60Hz 230VY
H=60Hz 230V△
J=60Hz 575VY
K=60Hz 575V△

注:3kW及以下可选代号:
1,2,7,8,A,C,E;
4kW及以上可选代号:
3,4,5,6,B,D,F

机座材质

L=铝机座(机座号100及以下规格标配)
C=铸铁机座(机座号112及以上规格标配)

安装形式A

功率代号¹⁾

马达极数¹⁾

4=4极
6=6极

机座号¹⁾

马达系列¹⁾

MS=标准效率三相交流异步马达(IE1)
MH=高效率三相交流异步马达(IE2)
MP=超高效率三相交流异步马达(IE3)

Cable Entry Position

1/2/3/4

Terminal Box Position

1/2/3/4

Motor mounting Position 0

Motor protection

0=standard configuration(IP55/F)
1=with rain cover
J=with metal joint
4=IP65/with metal joint
K=with metal joint and rain cover
5=IP65/with metal joint and rain cover IP55)

Thermal Protection and Heating Protection

0=Without thermal protection and heating Protection
1=Thermistor
2=Thermal switch
3=PT100 temperature sensor
4=Heating belt
5=Thermistor and heating belt
6=Thermal switch and heating belt
7=PT100 temperature sensor and heating belt

Brake

N=Without Brake
A=Brake 220-240VAC
B=Brake 380-415VAC
D=Brake with release handle 220-240VAC
E=Brake with release handle 380-415VAC
R=Double-brakes with release handle 220-240VAC
S=Double-brakes with release handle 380-415VAC

Encoder

0=Without encoder
1=Encoder E25A
2=Standard encoder accessories
3=Encoder E25B
4=Encoder E25C

Cooling

A=Self - fan cooling
F=Driven fan

Frequency/Voltage Code

1=50Hz 220V△/380VY
2=50Hz 230V△/400VY
3=50Hz 380V△/660VY
4=50Hz 400V△/690VY
5=60Hz 440V△
6=60Hz 460V△
7=60Hz 440VY
8=60Hz 460VY
A=50Hz 240V△/415VY
B=50Hz 415V△
C=60Hz 480VY
D=60Hz 480V△
E=60Hz 220V△/380VY
F=60Hz 380V△
G=60Hz 230VY
H=60Hz 230V△
J=60Hz 575VY
K=60Hz 575V△

Note: Alternative code of 3kW and below: 1,2,7,8,A,C,E;
Alternative code of 4kW and above: 3,4,5,6,B,D,F.

Frame Material

L=Die-casting aluminum frame(standard configuration of 100 and below)
C=Grey cast iron frame(standard configuration of 112 and above)

Mounting Mode A

Power Code¹⁾

Motor Poles¹⁾

4=4-pole
6=6-pole

Frame Size¹⁾

Motor Type¹⁾

MS=Three-phase asynchronous motor(IE1)
MH=High efficiency three-phase asynchronous motor(IE2)
MP=Premium efficiency three-phase asynchronous motor(IE3)

◆配输入法兰或输入轴型号示例:

S208HA-C32-D100-AE3

◆配输入法兰和马达型号示例:

S208HA-C32-D100-AP132-MH132S4B55FC3-A0N10-011

◆组合型号示例:

S208HA/C205-D28-D100-MH080M4A75AL1-A0N00-011

注:MA系列(NEMA能效三相交流异步马达)可选极数代号4,频率/电压代号6,8,G,H,J,K,制动器代号A,D,G,K.

◆Example of product type with input flange or input shaft:

S208HA-C32-D100-AE3

◆Example of product type with input flange and motor type:

S208HA-C32-D100-AP132-MH132S4B55FC3-A0N10-011

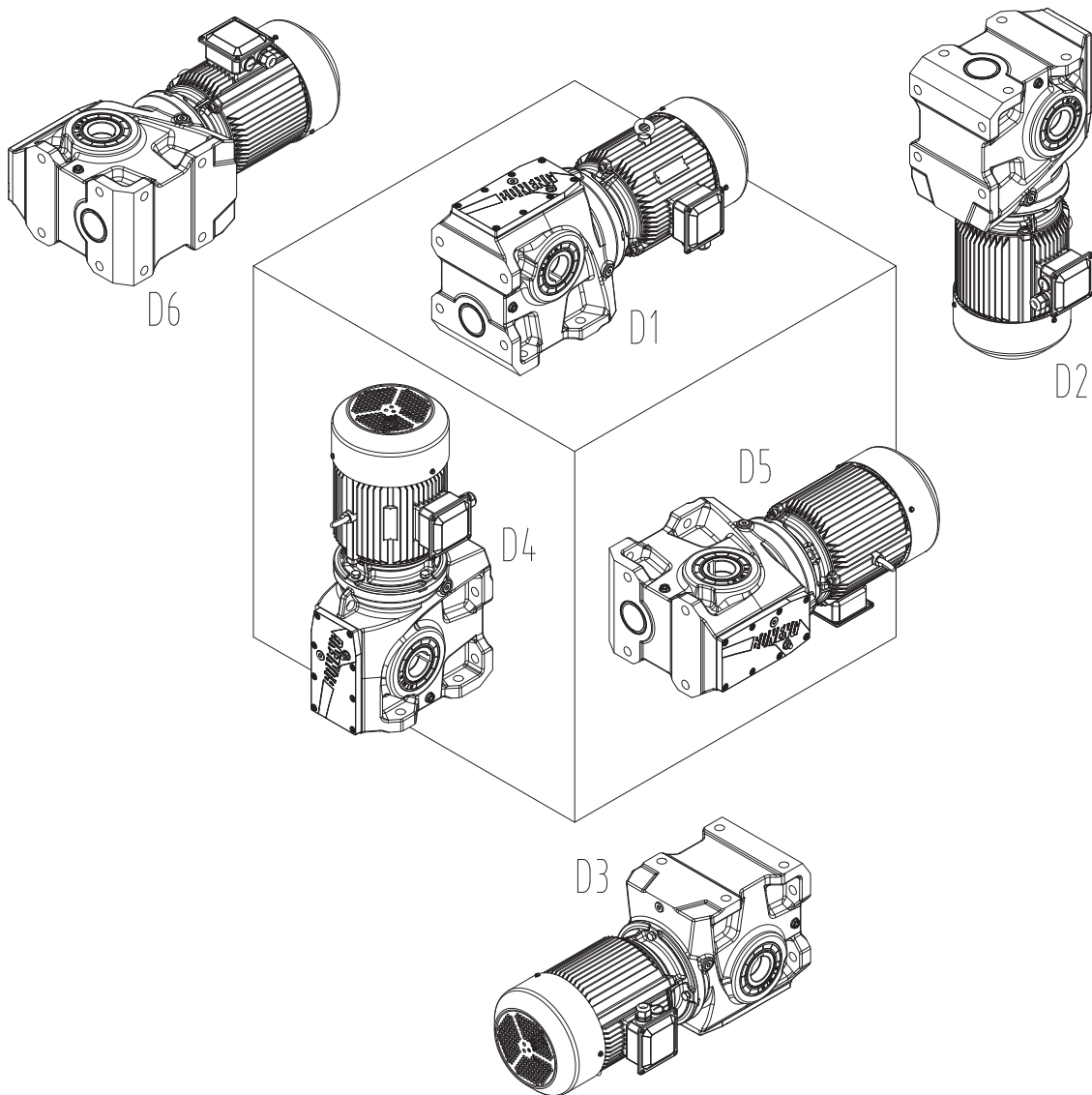
◆Combi-type Designation:

S208HA/C205-D28-D100-MH080M4A75AL1-A0N00-011

Note:MA motor series(NEMA efficiency three-phase asynchronous motor) can be configured with pole code 4, frequency/voltage code 6,8,G,H,J,K, brake code A,D,G,K.

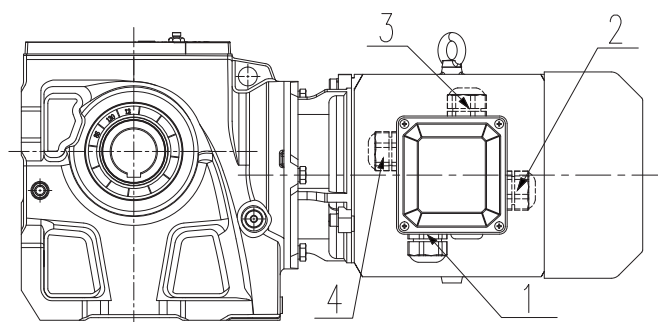
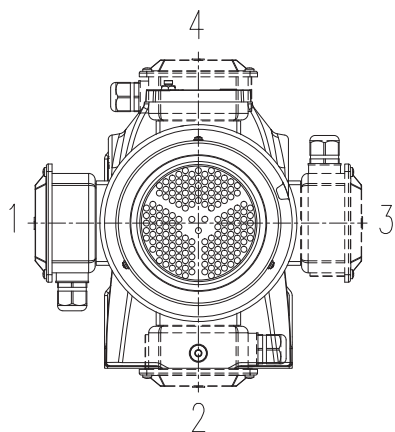
2 安装方位

2 Mounting Positions



马达接线盒和进线孔位置
(视角:马达尾部)

Motor terminal box and cable entry
position (View: Motor afterbody)



整机标配颜色
■ (RAL5015)

Assembly colour of gearmotor
■ (RAL5015)

3 选型及举例

序号	说明	代号	参数计算							
			每天使用时间（小时）							
1	被驱动设备系数	f ₁	负荷性质	≤2		2~10		10~24		
			均匀负载	1.00(1.00)		1.00(1.25)		1.25(1.50)		
			一般冲击	1.00(1.25)		1.25(1.50)		1.50(1.75)		
			强烈冲击	1.25(1.50)		1.50(1.75)		1.75(2.00)		
			注：当每小时起动、停止次数≥10次，请使用括号内数值； 当每天使用时间≤10小时，设备连续运转时需f ₁ ≥1.25。							
2	环境温度系数	f _t	负荷性质	环境温度						
				20	25	30	35	40	45	50
			均匀负载	1.00	1.00	1.00	1.03	1.06	1.12	1.20
			一般冲击	1.00	1.01	1.02	1.06	1.12	1.16	1.30
	强烈冲击	1.00	1.02	1.04	1.10	1.17	1.20	1.40		
3	输入转速	n ₁	≤1800r/min 更高转速请咨询							
4	确定减速比	i	i=n ₁ /n ₂							
5	传动效率	η		i=7.1-16	i=18-50	i=56-112	i=125-500	S/C组合		
			η	88%	77%	62%	57%	57%		
6	以被动设备所需的扭矩或功率，确定齿轮马达的输入功率	P ₁	P ₁ =T ₂ ·n ₁ /(9550·i·η) 或 P ₁ =P ₂ /η							
7	根据计算，查传动能力表，确定齿轮马达规格，直联马达时需查直联马达功率表	T _{2N} 、P _{1N}	T _{2N} ≥T ₂ ·f ₁ ·f _t 或 P _{1N} ≥P ₁ ·f ₁ ·f _t							
8	径向力、轴向力校核	Fr ₁ /Fr ₂ Fa ₁ /Fa ₂	查第16页，S系列Fr ₂ 表							
9	确认润滑方式		一般采用飞溅润滑							
10	确认冷却方式		一般采用自然冷却							
11	按型号表示方法确定各项		型号表示方法见第1页							
12	一般环境条件		环境温度：-20至40℃，空旷场地通风良好，海拔高度1000米一下，一般工厂灰尘。							
13	特殊环境条件		高温、低温、灰尘多、化学作用（例：酸碱等），露天（直接日照、冰、水淋等），请咨询。							

n₂:被驱动设备所需的输出转速 P₂:被驱动设备所需的输出功率 P_{1N}:齿轮马达的额定输入功率
T₂:被驱动设备所需的输出扭矩 T_{2N}:齿轮马达的额定输出扭矩

举例

◆ 已知条件:

- 1、被驱动设备负荷性质：一般冲击，
工作8小时/天，环境温度40℃，启动频率10次/小时；
- 2、马达：4极，
转速 $n_1=1450\text{r}/\text{min}$ ；
- 3、所需功率 $P_2=1\text{kW}$ ，
所需转速 $n_2=10.4\text{r}/\text{min}$ ；
- 4、安装输出形式：法兰安装，单向实心输出A向，
安装方位D1，马达接线盒2号位，进线孔1号位。

◆ 选型步骤:

- 1、根据负荷性质查表可得出被驱动设备系数 $f_1=1.5$ ；
环境温度系数 $f_t=1.12$ ；
- 2、确定公称减速比 i_N ：
 $i=n_1/n_2=1450/10.4=139.4$ ，取公称减速比 $i_N=140$ ；
- 3、计算输入功率并确定马达功率(查表得出齿轮传动效率 $\eta=57\%$)：
 $P_1 \geq P_2 / \eta = 1 / 0.57 = 1.8\text{kW}$ ，取马达功率为2.2kW；
查直联马达表，可直联；
- 4、确定减速机额定功率 P_{1N} ：
 $P_{1N} \geq P_2 \cdot f_1 / \eta = 1 \cdot 1.5 \cdot 1.12 / 0.57 = 2.9\text{kW}$ ；
- 5、根据已知条件和以上数据，
查传动能力表可选出齿轮马达型号为：
S208FA-D14-D100-MS100M4B22AL2-A0N00-021

3 Type Selection and Example

Step	Description	Symbol	Parameters Calculation and Guideline							
1	Driven Machine Factor	f_1	Operating hours per day (h)							
			Load Characteristic	2		2~10		10~24		
			Uniform	1.00(1.00)		1.00(1.25)		1.25(1.50)		
			Moderate	1.00(1.25)		1.25(1.50)		1.50(1.75)		
			Heavy	1.25(1.50)		1.50(1.75)		1.75(2.00)		
			Note: Apply values in the brackets when starts per hour are 10 times or more. If the equipment continues working and the operating time 10h per day , then $f_1 > 1.25$.							
2	Ambient temperature factor	f_t	Ambient temperature							
			Load characteristic	20	25	30	35	40	45	50
			Uniform	1.00	1.00	1.00	1.03	1.06	1.12	1.20
			Moderate	1.00	1.01	1.02	1.06	1.12	1.16	1.30
			Heavy	1.00	1.02	1.04	1.10	1.17	1.20	1.40
			Note:The usual working condition is:ambient temperature - 10 ~ +40 , uniform or moderate shock,utilization ratio 90%,working hours/d 8, and input speed 1800rpm.If not within this range,add fans to the worm shaft end of gear units type S205 and above.							
3	Input speed	n_1	1800r/min Consult us if higher speed required.							
4	Calculation of the ratio	i	$i=n_1/n_2$							
5	Transmission efficiency		$i=7.1 - 16$	$i=18 - 50$	$i=56 - 112$	$i=125 - 500$	S/C combi - type			
			88%	77%	62%	57%	57%			
6	Calculation of the input power of the gearmotor on basis of the torque and power required by the driven machine.	P_1	$P_1=T_2 \cdot n_1/(9550 \cdot i \cdot \eta)$ or $P_1=P_2/$							
7	Determination of gearmotor type referring to the table of transmission capacity after calculation, For directly - connected motor, require to refer to directlyconnected motor power table.	T_{2N} P_{1N}	$T_{2N} = T_2 \cdot f_1 \cdot f_t$ or $P_{1N} = P_1 \cdot f_1 \cdot f_t$							
8	Check the radial and axial forces on the shafts	F_{r1}/F_{r2} F_{a1}/F_{a2}	See P16							
9	Determination of lubrication system	/	Generally splash lubrication							
10	Determination of cooling system	/	Generally air cooling							
11	Determination of every item included in the type designation	/	For details about type designation, see P1.							
12	Normal ambient conditions	/	Ambient temperature - 10 to 40 , ample space, good ventilation, altitude not exceeding 1000m and common plant dust.							
13	Special ambient conditions	/	For higher or lower temperature, dusty sites, chemical reaction (acids, alkaline, etc) , or open field (sunlight, ice, rain, etc) , please consult us!							

n_2 : The output speed required by the driven machine. P_2 : The output power required by the driven machine.
 P_{1N} : The rated input power of gearmotor. T_2 : The output torque required by the driven machine.
 T_{2N} : The rated output torque of gearmotor.

Example

◆ Known Criteria:

- 1、 Load characteristics by the driven machine :
Moderate, working 8 hours/d, ambient temperature 40 , and starting 10 times/h;
- 2、 Normal motor: 4 - pole ,
speed $n_1=1450\text{r/min}$;
- 3、 The power required $P_2=1\text{kW}$,
speed $n_2=10.4\text{r/min}$;
- 4、 Mounting mode: flange - mounted, unidirectional output shaft A,
mounting position D1, motor terminal box 2, cable entry position 1.

◆ Selection steps:

- 1、 By referring to the table of Load Characteristic,
we get the driven machine factor $f_1=1.5$,
the ambient temperature factor $f_2=1.12$;
- 2、 Calculation of the Ratio i_N :
 $i=N_1/ N_2=1450/10.4=139.4$, nominal ratio $i_N=140$;
- 3、 Calculation of the input power and determination of the motor power
(transmission efficiency $\eta=57\%$) :
 $P_1 = P_2 / \eta = 1/0.57=1.8\text{kW}$, so 2.2kW motor is selected.
Refer to the directly - connected motor power table, it can be directly - connected;
- 4、 Determination of the nominal power of the geared motor P_{1N} :
 $P_{1N} = P_2 \cdot f_1 / \eta = 1 \times 1.5 \times 1.12 / 0.57=2.9\text{kW}$;
- 5、 The type selected :
S208FA - D14 - D100 - MS100M4B322AL2 - A0N00 - 021

4 传动能力表

4.1 S系列传动能力表

S...(iN=7.1-500)

4 Transmission Capacity

4.1 S Transmission capacity

S...(iN=7.1-500)

公称输入转速	公称输出转速	公称减速比代号	公称减速比	额定输出扭矩	精确减速比	额定输入功率	额定输出扭矩	精确减速比	额定输入功率	额定输出扭矩	精确减速比	额定输入功率	额定输出扭矩	精确减速比	额定输入功率
Nominal Input Speed	Nominal Output Speed	Nominal Ratio Code	Nominal Ratio	Rated Output Torque	Exact Ratio	Rated Input Power	Rated Output Torque	Exact Ratio	Rated Input Power	Rated Output Torque	Exact Ratio	Rated Input Power	Rated Output Torque	Exact Ratio	Rated Input Power
n_{1N} (r/min)	n_{2N} (r/min)	Code	i_N	T_{2N} (N·m)	iex	P_{1N} (kW)	T_{2N} (N·m)	iex	P_{1N} (kW)	T_{2N} (N·m)	iex	P_{1N} (kW)	T_{2N} (N·m)	iex	P_{1N} (kW)
				S203/C201			S204/C201			S205/C203			S206/C203		
1450	204	B71	7.1	55	6.81	1.39	110	7.28	2.61				330	7.03	8.1
	181	B80	8	55	7.68	1.24	110	8.03	2.36	200	7.93	4.35	350	8.37	7.2
	161	B90	9	55	8.75	1.08	110	9.05	2.10	200	8.90	3.88	380	9.32	7.0
	145	C10	10	60	9.89	1.05	110	10.3	1.84	200	10.1	3.43	380	10.3	6.4
	129	C11	11.2	60	11.2	0.92	110	11.7	1.63	220	11.2	3.40	380	11.6	5.6
	116	C13	12.5	60	12.1	0.86	110	13.2	1.44	220	12.8	2.97	400	12.7	5.4
	104	C14	14	65	14.1	0.79	120	14.2	1.46	220	14.1	2.70	430	14.5	5.1
	90.6	C16	16	70	16.0	0.75	120	15.8	1.31	220	15.8	2.40	450	15.4	5.0
	80.6	C18	18	65	17.6	0.73	120	17.4	1.36	220	18.8	2.31	450	17.9	4.95
	72.5	C20	20	70	19.3	0.72	135	19.7	1.35	220	21.1	2.06	450	20.5	4.32
	64.7	C22	22.4	75	21.0	0.70	150	22.4	1.32	230	23.8	1.91	450	23.3	3.80
	58.0	C25	25	75	24.0	0.62	160	25.3	1.25	250	26.4	1.87	450	26.1	3.40
	51.8	C28	28	80	27.1	0.58	160	28.7	1.10	250	30.3	1.63	450	29.1	3.05
	46.0	C32	31.5	80	30.7	0.51	160	30.9	1.02	250	33.2	1.48	480	31.9	2.96
	40.8	C36	35.5	80	33.0	0.48	160	35.3	0.89	260	37.5	1.37	480	36.3	2.61
	36.3	C40	40	80	38.7	0.41	160	38.9	0.81	260	40.1	1.28	480	39.7	2.39
	32.2	C45	45	85	43.8	0.38	165	43.9	0.74	260	44.5	1.15	510	45.1	2.23
	29.0	C50	50	85	48.3	0.35	180	50.0	0.71	290	50.3	1.14	540	48.0	2.22
	25.9	C56	56	80	55.9	0.35	155	56.5	0.67	245	55.8	1.08	480	53.8	2.19
	23.0	C63	63	85	63.1	0.33	160	64.0	0.61	270	63.9	1.03	500	61.6	1.99
	20.4	C71	71	85	71.9	0.29	160	68.9	0.57	300	70.3	1.05	500	70.0	1.75
	18.1	C80	80	85	81.3	0.26	170	78.2	0.53	300	79.2	0.93	500	78.3	1.56
	16.1	C90	90	90	92.0	0.24	170	89.1	0.47	300	87.6	0.84	520	87.2	1.46
	14.5	D10	100	95	99.1	0.23	170	100.7	0.41	310	98.9	0.77	520	95.8	1.33
	12.9	D11	112	90	116.0	0.19	170	114.0	0.37	300	109.8	0.67	520	117.6	1.08
	11.6	D13	125	100	131.4	0.20	170	122.8	0.37	300	125.8	0.64	520	129.3	1.07
	10.4	D14	140	100	144.9	0.18	170	143.7	0.32	300	138.3	0.58	520	146.8	0.94
	9.06	D16	160	100	158.4	0.17	170	162.9	0.28	300	155.9	0.51	520	160.5	0.86
	8.06	D18	180	100	173.2	0.15	170	179.6	0.25	300	166.6	0.48	520	182.6	0.76
	7.25	D20	200					170	196.3	0.23	300	193.6	0.41	520	194.1
6.47	D22	224					170	214.6	0.21	300	217.9	0.37	520	224.4	0.62
5.80	D25	250											520	266.8	0.52
5.18	D28	280											520	283.9	0.49
4.60	D32	315											520	320.7	0.43
4.08	D36	355													
3.63	D40	400													
3.22	D45	450													
2.90	D50	500													

注：(1) 齿轮马达的实际输出转速应是实际输入转速 n_1 /精确减速比 i_{ex} ；
 (2) 齿轮马达的实际输入转速 n_1 对应的额定输入功率应是：
 $P_{1N} = T_{2N} \cdot n_1 / (9550 \cdot i_{ex})$ ，公式中额定输出扭矩 T_{2N} 不变。

Note: (1) Actual output speed of the gearmotor: Actual input speed (n_1)/Exact ratio (i_{ex});
 (2) Rated input power corresponding to actual input speed of the gearmotor: $P_{1N} = T_{2N} \cdot n_1 / (9550 \cdot i_{ex})$, the rated output torque T_{2N} in the formula remains unchanged.

额定输出 扭矩	精确 减速比	额定输入 功率	额定输出 扭矩	精确 减速比	额定输入 功率	额定输出 扭矩	精确 减速比	额定输入 功率	额定输出 扭矩	精确 减速比	额定输入 功率	额定输出 扭矩	精确 减速比	额定输入 功率
Rated Output Torque	Exact Ratio	Rated Input Power	Rated Output Torque	Exact Ratio	Rated Input Power	Rated Output Torque	Exact Ratio	Rated Input Power	Rated Output Torque	Exact Ratio	Rated Input Power	Rated Output Torque	Exact Ratio	Rated Input Power
T _{2N} (N·m)	ie _x	P _{1N} (kW)	T _{2N} (N·m)	ie _x	P _{1N} (kW)	T _{2N} (N·m)	ie _x	P _{1N} (kW)	T _{2N} (N·m)	ie _x	P _{1N} (kW)	T _{2N} (N·m)	ie _x	P _{1N} (kW)
S207			S208			S209			S210			S212		
700	7.41	16.3												
750	8.44	15.3												
750	9.35	13.8	1300	9.80	22.9									
750	10.7	12.1	1300	11.1	20.1									
750	12.1	10.7	1300	12.9	17.4									
820	13.6	10.4	1300	14.1	15.9									
880	15.5	9.8	1450	15.8	15.8									
850	17.2	9.7	1380	17.4	15.7	2700	18.4	28.9	3800	17.9	41.8	7000	18.1	76
950	19.7	9.5	1550	20.1	15.2	2700	21.0	25.4	3800	19.6	38.2	7000	20.2	68
1000	22.2	8.9	1600	21.4	14.8	2700	24.3	21.9	4000	23.2	34.0	7000	23.8	58
1050	23.9	8.7	1600	24.3	13.0	2900	26.5	21.6	4100	26.0	31.1	7400	25.9	56
1050	27.2	7.6	1600	29.8	10.6	3100	29.8	20.5	4300	27.7	30.6	7700	30.2	50
1100	30.1	7.2	1600	32.6	9.7	3300	32.6	19.9	4600	31.7	28.6	8200	33.5	48.3
1100	34.5	6.3	1600	37.7	8.4	3300	37.7	17.3	4700	35.3	26.3	8600	35.5	47.8
1100	38.8	5.6	1600	40.2	7.8	3300	40.2	16.2	4700	40.0	23.2	8600	40.3	42.0
1100	43.4	5.00	1600	45.7	6.9	3300	47.1	13.8	4700	44.8	20.7	8700	45.1	38.0
1100	48.3	4.49	1700	48.9	6.8	3600	50.5	14.1	4900	51.2	18.9	9000	50.1	35.4
1000	57.6	4.25	1400	57.8	5.9	3300	54.7	14.8	4400	55.0	19.6	8000	55.4	35.4
1100	64.8	4.16	1500	65.0	5.7	3300	59.6	13.6	4700	60.2	19.1	8600	62.0	34.0
1100	70.9	3.80	1700	71.2	5.8	3300	72.9	11.1	4600	71.2	15.8	8600	73.1	28.8
1100	83.3	3.23	1800	82.3	5.4	3300	82.9	9.8	4600	79.8	14.1	8600	79.3	26.5
1100	91.9	2.93	1900	87.7	5.3	3300	88.7	9.1	4700	85.2	13.5	8500	92.6	22.5
1200	105.5	2.79	2000	102.9	4.76	3300	104.7	7.7	4900	97.4	12.3	9250	102.7	22.1
1200	118.6	2.48	2000	115.7	4.23	3600	117.8	7.5	5000	112.3	10.9	9000	108.9	20.2
1200	132.6	2.41	2000	126.9	4.20	3700	129.1	7.6	5200	128.4	10.8	9200	121.5	20.2
1300	147.6	2.35	2100	146.6	3.82	3800	149.1	6.8	5300	142.8	9.9	9500	134.6	18.8
1300	161.8	2.14	2200	156.3	3.75	3900	159.0	6.5	5400	161.9	8.9	9600	162.3	15.8
1300	175.9	1.97	2300	180.5	3.39	4000	183.7	5.8	5600	181.5	8.2	9900	181.5	14.5
1300	197.7	1.75	2300	205.2	2.99	4000	208.8	5.1	5600	207.1	7.2	10200	201.6	13.5
1300	216.6	1.60	2300	228.0	2.69	4000	232.0	4.59	5700	220.8	6.9	10200	236.0	11.5
1300	254.3	1.36	2300	256.5	2.39	4000	261.0	4.08	5700	253.8	6.0	10200	253.7	10.7
1300	282.6	1.23	2300	282.2	2.17	4000	287.1	3.71	5700	285.4	5.3	10200	285.2	9.5
1300	310.9	1.11	2300	308.3	1.99	4000	313.7	3.40	5700	315.2	4.82	10200	328.2	8.3
1300	350.6	0.99	2300	357.0	1.72	4000	363.3	2.93	5700	354.4	4.28	10200	365.1	7.4
			2300	393.8	1.56	4000	400.7	2.66	5700	419.2	3.62	10200	429.4	6.3
			2300	465.0	1.32	4000	473.2	2.25				10200	466.1	5.8
			2300	519.7	1.18	4000	528.8	2.01						

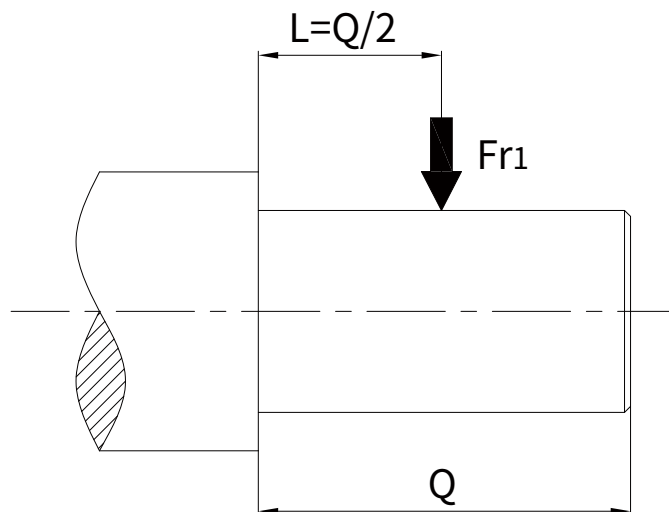
额定输出 扭矩	精确 减速比	额定输入 功率	额定输出 扭矩	精确 减速比	额定输入 功率	额定输出 扭矩	精确 减速比	额定输入 功率	额定输出 扭矩	精确 减速比	额定输入 功率	额定输出 扭矩	精确 减速比	额定输入 功率	
Rated Output Torque	Exact Ratio	Rated Input Power	Rated Output Torque	Exact Ratio	Rated Input Power	Rated Output Torque	Exact Ratio	Rated Input Power	Rated Output Torque	Exact Ratio	Rated Input Power	Rated Output Torque	Exact Ratio	Rated Input Power	
T _{2N} (N·m)	ie _x	P _{1N} (kW)	T _{2N} (N·m)	ie _x	P _{1N} (kW)	T _{2N} (N·m)	ie _x	P _{1N} (kW)	T _{2N} (N·m)	ie _x	P _{1N} (kW)	T _{2N} (N·m)	ie _x	P _{1N} (kW)	
S207/C203			S208/C205			S209/C205			S210/C207			S212/C208			
1300	200.4	1.73	2300	219.8	2.79										
1300	218.0	1.59	2300	245.8	2.49										
1300	245.0	1.41	2300	273.3	2.24	4000	273.3	3.90	5700	252.0	6.02	10200	258.1	10.53	
1300	276.7	1.25	2300	300.8	2.04	4000	300.8	3.54	5700	287.0	5.29	10200	282.9	9.60	
1300	307.1	1.13	2300	341.6	1.79	4000	341.6	3.12	5700	318.1	4.77	10200	326.6	8.32	
1300	351.9	0.98	2300	364.2	1.68	4000	364.2	2.93	5700	363.6	4.18	10200	369.2	7.36	
1300	386.4	0.90	2300	407.2	1.50	4000	407.2	2.62	5700	409.5	3.71	10200	401.2	6.77	
									S210/C307						
1300	434.7	0.80	2300	452.4	1.35	4000	452.4	2.36	5700	444.8	3.41	10200	450.9	6.03	
1300	465.8	0.74	2300	565.5	1.08	4000	565.5	1.88	5700	511.9	2.97	10200	493.5	5.51	
S207/C303															
1300	527.9	0.66	2300	618.3	0.99	4000	618.3	1.72	5700	543.6	2.79	10200	571.6	4.75	
1300	596.9	0.58	2300	705.0	0.87	4000	705.0	1.51	5700	624.8	2.43	10200	610.6	4.45	
												S212/C308			
1300	679.7	0.51	2300	750.2	0.82	4000	750.2	1.42	5700	730.7	2.08	10200	710.0	3.83	
			S208/C305			S209/C305									
1300	765.9	0.45	2300	844.5	0.73	4000	844.5	1.26	5700	819.0	1.85	10200	784.6	3.46	
1300	869.4	0.40	2300	950.0	0.64	4000	950.0	1.12	5700	935.5	1.62	10200	901.7	3.01	
1300	928.1	0.37	2300	1071	0.57	4000	1071	1.00	5700	999.0	1.52	10200	1015	2.68	
1300	1045	0.33	2300	1188	0.52	4000	1188	0.90	5700	1144	1.33	10200	1125	2.41	
1300	1190	0.29	2300	1361	0.45	4000	1361	0.78	5700	1303	1.17	10200	1292	2.10	
1300	1349	0.26	2300	1497	0.41	4000	1497	0.71	5700	1341	1.13	10200	1456	1.87	
1300	1525	0.23	2300	1776	0.35	4000	1776	0.60	5700	1539	0.99	10200	1562	1.74	
1300	1642	0.21	2300	1972	0.31	4000	1972	0.54	5700	1747	0.87	10200	1779	1.53	
1300	1922	0.18	2300	2258	0.27	4000	2258	0.47	5700	1956	0.78	10200	1974	1.38	
1300	2236	0.15	2300	2347	0.26	4000	2152	0.50	5700	2221	0.68	10200	2257	1.20	
												S212/C307			
1300	2534	0.14	2300	2581	0.24	4000	2366	0.45	5700	2288	0.66	10200	2356	1.15	
1300	2864	0.12	2300	3062	0.20	4000	2807	0.38	5700	2625	0.58	10200	2703	1.01	
1300	3084	0.11	2300	3400	0.18	4000	3117	0.34	5700	2980	0.51	10200	3069	0.89	
1300	3609		2300	3894	0.16	4000	3570	0.30	5700	3335	0.46	10200	3435	0.79	
1300	4095		2300	4277	0.14	4000	3922	0.27	5700	3714	0.41	10200	3825	0.71	
1300	4510		2300	4823	0.13	4000	4422	0.24	5700	4082	0.37	10200	4204	0.65	
1300	4931		2300	5155	0.12	4000	4726	0.23	5700	4635	0.33	10200	4774	0.57	
1300	5391		2300	5993	0.10	4000	5495	0.19	5700	5767	0.26	10200	5940	0.46	
1300	6326		2300	6205		4000	6312	0.17	5700	6152	0.25	10200	6167	0.44	
1300	7152		2300	7362		4000	7489	0.14	5700	7059	0.22	10200	7076	0.38	
1300	7702		2300	8174		4000	8316	0.13	5700	8014	0.19	10200	8034	0.34	
1300	9012		2300	9362		4000	9524	0.11	5700	8969	0.17	10200	8991	0.30	
1300	10226		2300	10285		4000	10462		5700	9989	0.15	10200	10014	0.27	
1300	11261		2300	11597		4000	11798		5700	10977	0.14	10200	11004	0.25	
1300	12313		2300	12395		4000	12609		5700	12466	0.12	10200	12497	0.22	
1300	13462		2300	14411		4000	14660		5700	15510	0.10	10200	15548	0.17	
			2300	16208		4000	16488		5700	16481		10200	16522	0.16	
			2300	17709		4000	18015		5700	19056		10200	19103	0.14	
			2300	19412		4000	19748		5700	20157		10200	20206	0.13	
			2300	21101		4000	21465		5700	22666		10200	22722	0.12	
									5700	24107		10200	24166	0.11	
									5700	27232		10200	27299		

5 允许的径向力

5.1 输入轴径向力Fr1表(N)

5 Permissible Radial Force

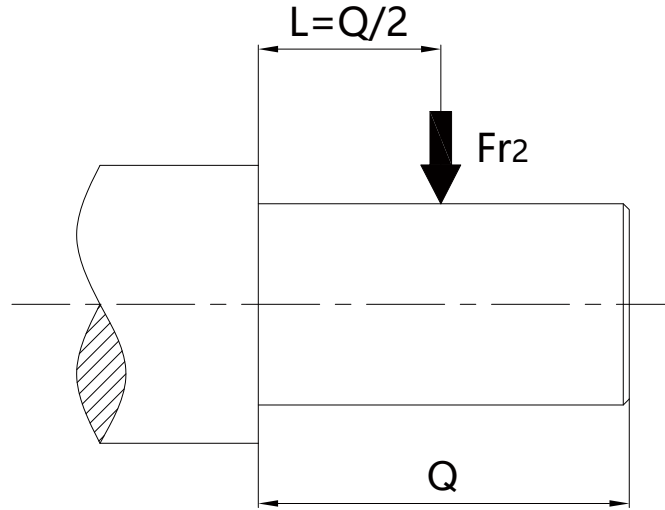
5.1 Radial force on input shaft (Fr1) (N)



	Fr1(N)								
	S203	S204	S205	S206	S207	S208	S209	S210	S212
AE2	803	803	803	803	803	803	/	/	/
AE3	/	/	1504	1504	1504	1504	1504	1504	/
AE4	/	/	/	/	2188	2188	2188	2188	2188
AE5	/	/	/	/	/	/	4207	4207	4207
AE6	/	/	/	/	/	/	/	5664	5664
AE7	/	/	/	/	/	/	/	/	9957

5.2 输出轴径向力Fr2表(N)

5.2 Radial force on output shaft (Fr2) (N)

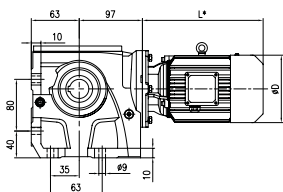


n_{2N} (r/min)	Fr2(N)								
	S203	S204	S205	S206	S207	S208	S209	S210	S212
200~224	370	520	860	860	870	3170	3620	5190	7270
180~200	460	650	1080	1070	1090	3960	4530	6490	9090
160~180	580	810	1350	1340	1360	4950	5660	8110	11360
125~160	720	1010	1680	1670	1700	6190	7070	10140	14200
112~125	900	1270	2110	2090	2120	7740	8840	12680	17760
100~112	1120	1580	2630	2610	2650	9680	11050	15850	22200
90~100	1400	1980	3290	3270	3310	12100	13820	19810	27740
80~90	1760	2480	4110	4090	4140	15120	17270	24760	34680
56~80	2151	3035	5041	5007	5075	18530	21165	30345	42500
45~56	2380	3332	5542	5304	6265	20995	24650	35275	47600
40~45	2380	3502	5814	5559	6571	22100	25840	36975	49725
35.5~40	2550	3502	5950	6163	6919	23035	26605	38063	51255
31.5~35.5	2550	3766	6222	6163	7438	23970	27880	39950	53720
28~31.5	2550	4004	6392	6851	7659	24650	28985	41565	56100
26.5~28	2550	4123	6392	6851	8203	24650	29325	43095	60350
22.4~26.5	2550	4522	6392	7370	9860	24650	29325	43095	60350
≤22.4	2550	4556	6392	7378	10455	24650	29325	43095	60350

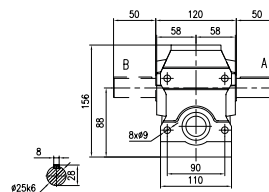
6 外形尺寸图表

6 Dimensions

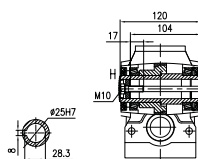
S203



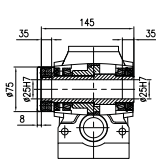
Horizontal foot-mounted (H)
Weight: 7kg (Without motor and oil)



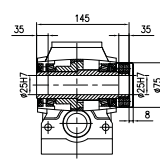
S203HA
S203HB
S203HC



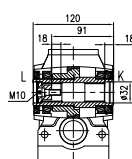
S203HG
S203HH



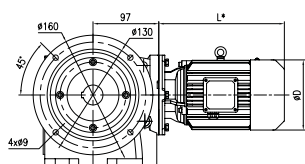
S203HI



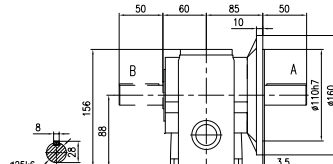
S203HJ



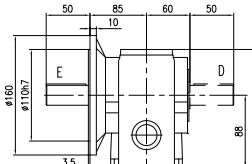
S203HK
S203HL



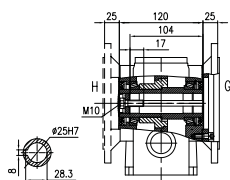
Flange-mounted (F)
Weight: 8.5kg (Without motor and oil)



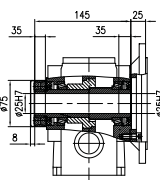
S203FA
S203FB
S203FC



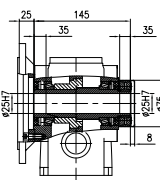
S203FD
S203FE
S203FF



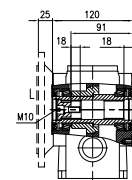
S203FG
S203FH



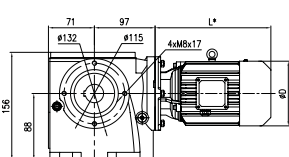
S203FI



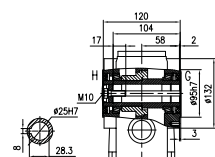
S203FJ



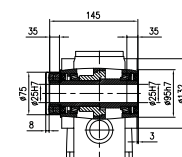
S203FK
S203FL



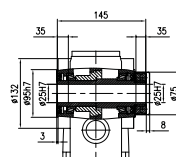
Short flange-mounted (S)
Weight: 7kg (Without motor and oil)



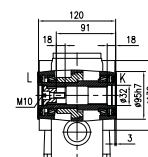
S203SG
S203SH



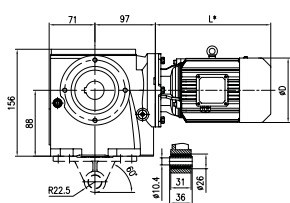
S203SI



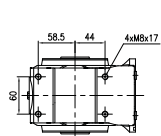
S203SJ



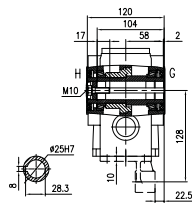
S203SK
S203SL



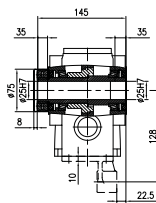
Torque arm-mounted with accessory (T)
Weight: 8.5kg (Without motor and oil)



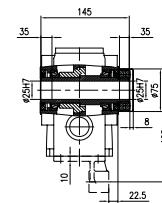
Torque arm-mounted without accessory (A)
Weight: 7kg (Without motor and oil)



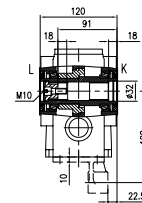
S203AG
S203AH
S203TG
S203TH



S203AI
S203TI



S203AJ
S203TJ



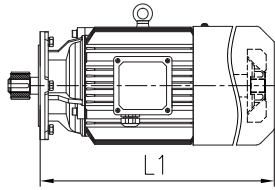
S203AK
S203AL
S203TK
S203TL

注:渐开线花键规格DIN5480:模数1.25×
齿数18×压力角30×大径25×9H

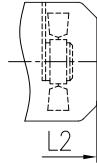
Note: Involute spline size DIN 5480:
m1.25×Z18×α30×D25×9H

配S203对应马达 的外形尺寸图表

Corresponding motor dimension table for S203



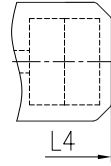
Fan



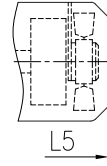
Driven fan



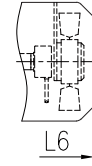
Brake
+ Fan



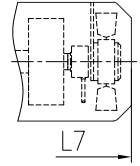
Double brake



Brake
+ Driven fan



Encoder
+ Driven fan



Brake
+ Encoder
+ Driven fan

直联马达尺寸表

Directly connected motor dimension table

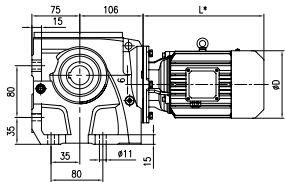
4极 功率 (kW)	4-pole power (kW)	适用 速比 范围	Range of Ratio	MS							MH							MP							MA							D
				L1	L2	L3	L4	L5	L6	L7	L1	L2	L3	L5	L6	L7	L1	L2	L3	L5	L6	L7	L1	L2	L3	L5	L6	L7				
0.12		7.1-180		/	261	241	/	296	/	/	206	261	241	296	/	/	206	261	241	296	/	/	206	261	241	296	/	/	124			
0.18		7.1-180		/	261	241	/	296	/	/	206	261	241	296	/	/	206	261	241	296	/	/	206	261	241	296	/	/	124			
0.25		7.1-100		/	268	263	/	313	313	353	223	268	263	313	313	353	223	268	263	313	313	353	223	273	263	318	318	358	139			
0.37		7.1-63		/	268	263	/	313	313	353	223	268	263	313	313	353	223	268	263	313	313	353	223	273	263	318	318	358	139			
0.55		7.1-35.5		299	344	359	419	404	404	454	299	344	359	404	404	454	299	344	359	404	404	454	299	344	359	404	404	449	162			
0.75		7.1-25		299	344	359	419	404	404	454	299	344	359	404	404	454	299	344	359	404	404	454	299	344	359	404	404	449	162			

直联马达重量表/kg

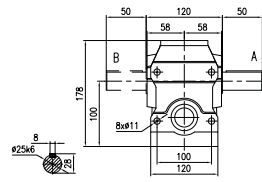
Directly connected motor weight table / kg

4极 功率 (kW)	4-pole power (kW)	适用 速比 范围	Range of Ratio	MS							MH							MP							MA						
				M1	M2	M3	M4	M5	M6	M7	M1	M2	M3	M5	M6	M7	M1	M2	M3	M5	M6	M7	M1	M2	M3	M5	M6	M7			
0.12		7.1-180		/	8	9	/	9	/	/	7	8	9	9	/	/	7	8	9	9	/	/	7	7.5	8.5	9	/	/			
0.18		7.1-180		/	8	9	/	9	/	/	7	8	9	9	/	/	8	9	10	10	/	/	8	8.5	9.5	10	/	/			
0.25		7.1-100		/	9	10	/	11	10	12	8	9	10	11	10	12	9	10	11	12	11	13	9	10	10.5	11.5	10.5	12.5			
0.37		7.1-63		/	10	11	/	12	11	13	9	10	11	12	11	13	10	11	12	13	12	14	10	11	11.5	12.5	11.5	13.5			
0.55		7.1-35.5		13	14	17	21	18	15	19	14	15	18	19	16	20	15	16	19	20	17	21	15	16	19	20	16.5	21			
0.75		7.1-25		14	15	18	22	19	16	20	15	16	19	20	17	21	16	17	20	21	18	22	16	17	20	21	17.5	22			

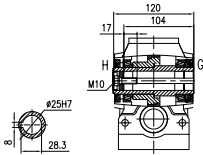
S204



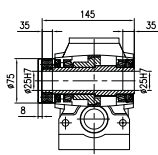
Horizontal foot-mounted (H)
Weight: 10kg (Without motor and oil)



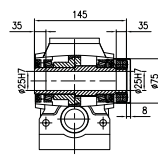
S204HA
S204HB
S204HC



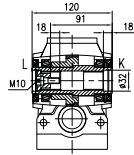
S204HG
S204HH



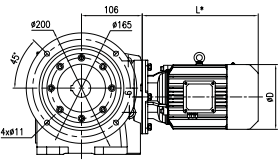
S204HI



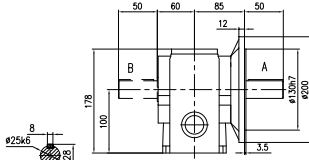
S204HJ



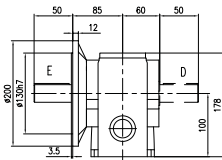
S204HK
S204HL



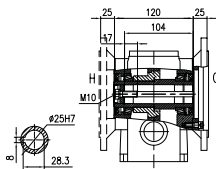
Flange-mounted (F)
Weight: 13kg (Without motor and oil)



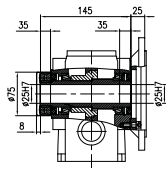
S204FA
S204FB
S204FC



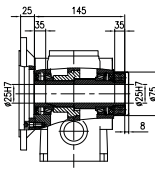
S204FD
S204FE
S204FF



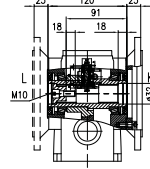
S204FG
S204FH



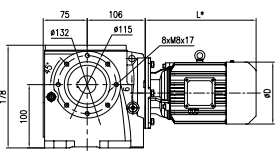
S204FI



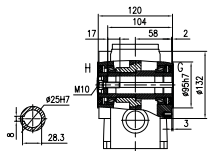
S204FJ



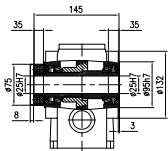
S204FK
S204FL



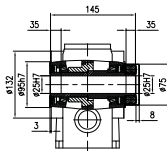
Short flange-mounted (S)
Weight: 10kg (Without motor and oil)



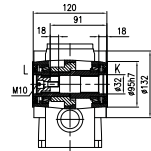
S204SG
S204SH



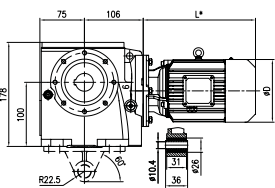
S204SI



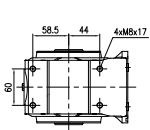
S204SJ



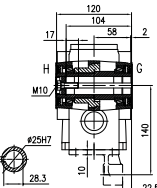
S204SK
S204SL



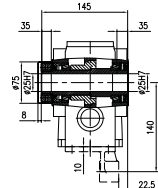
Torque arm-mounted with accessory (T)
Weight: 11.5kg (Without motor and oil)



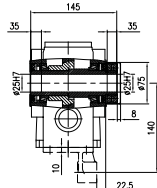
Torque arm-mounted without accessory (A)
Weight: 10kg (Without motor and oil)



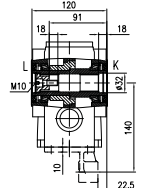
S204AG
S204AH
S204TG
S204TH



S204AI
S204TI



S204AJ
S204TJ



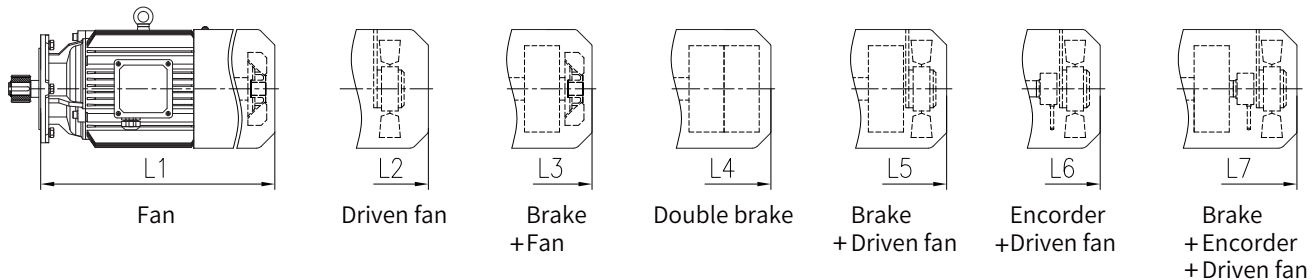
S204AK
S204AL
S204TK
S204TL

注:渐开线花键规格DIN5480:模数1.25×
齿数18×压力角30×大径25×9H

Note: Involute spline size DIN 5480:
m1.25×Z18×α30×D25×9H

配S204对应马达
的外形尺寸图表

Corresponding motor
dimension table for S204



直联马达尺寸表

Directly connected motor dimension table

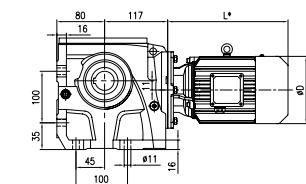
4极 4-pole 功率 power (kW) (kW)	适用 Range 速比 of 范围 Ratio	MS							MH							MP							MA							D
		L1	L2	L3	L4	L5	L6	L7	L1	L2	L3	L5	L6	L7	L1	L2	L3	L5	L6	L7	L1	L2	L3	L5	L6	L7				
0.12	7.1-224	/	261	241	/	296	/	/	206	261	241	296	/	/	206	261	241	296	/	/	206	261	241	296	/	/	124			
0.18	7.1-224	/	261	241	/	296	/	/	206	261	241	296	/	/	206	261	241	296	/	/	206	261	241	296	/	/	124			
0.25	7.1-224	/	268	263	/	313	313	353	223	268	263	313	313	353	223	268	263	313	313	353	223	273	263	318	318	358	139			
0.37	7.1-140	/	268	263	/	313	313	353	223	268	263	313	313	353	223	268	263	313	313	353	223	273	263	318	318	358	139			
0.55	7.1-90	299	344	359	419	404	404	454	299	344	359	404	404	454	299	344	359	404	404	454	299	344	359	404	404	449	162			
0.75	7.1-63	299	344	359	419	404	404	454	299	344	359	404	404	454	299	344	359	404	404	454	299	344	359	404	404	449	162			
1.1	7.1-35.5	322	367	377	437	422	422	477	322	367	377	422	422	477	322	367	377	422	422	477	347	392	402	452	452	497	176			
1.5	7.1-20	322	367	377	437	422	422	477	322	367	377	422	422	477	347	392	402	447	447	502	347	392	402	452	452	497	176			

直联马达重量表/kg

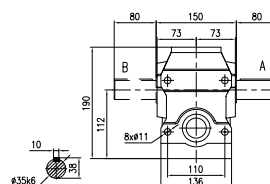
Directly connected motor weight table / kg

4极 4-pole 功率 power (kW) (kW)	适用 Range 速比 of 范围 Ratio	MS							MH							MP							MA						
		M1	M2	M3	M4	M5	M6	M7	M1	M2	M3	M5	M6	M7	M1	M2	M3	M5	M6	M7	M1	M2	M3	M5	M6	M7			
0.12	7.1-224	/	8	9	/	9	/	/	7	8	9	9	/	/	7	8	9	9	/	/	7	7.5	8.5	9	/	/			
0.18	7.1-224	/	8	9	/	9	/	/	7	8	9	9	/	/	8	9	10	10	/	/	8	8.5	9.5	10	/	/			
0.25	7.1-224	/	9	10	/	11	10	12	8	9	10	11	10	12	9	10	11	12	11	13	9	10	10.5	11.5	10.5	12.5			
0.37	7.1-140	/	10	11	/	12	11	13	9	10	11	12	11	13	10	11	12	13	12	14	10	11	11.5	12.5	11.5	13.5			
0.55	7.1-90	13	14	17	21	18	15	19	14	15	18	19	16	20	15	16	19	20	17	21	15	16	19	20	16.5	21			
0.75	7.1-63	14	15	18	22	19	16	20	15	16	19	20	17	21	16	17	20	21	18	22	16	17	20	21	17.5	22			
1.1	7.1-35.5	16	17	20	24	21	18	22	18	19	22	23	20	24	21	22	25	26	23	27	23	24	27	28	24.5	29			
1.5	7.1-20	17	18	21	25	22	19	23	19	20	23	24	21	25	23	24	27	28	25	29	23	24	27	28	24.5	29			

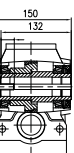
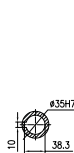
S205



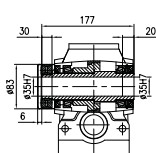
Horizontal foot-mounted (H)
Weight: 15kg (Without motor and oil)



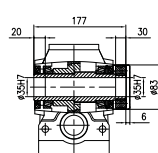
S205HA
S205HB
S205HC



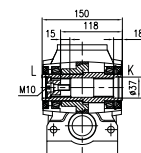
S205HG
S205HH



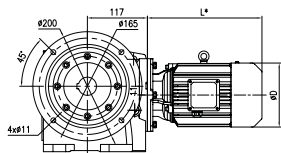
S205HI



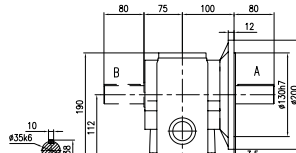
S205HJ



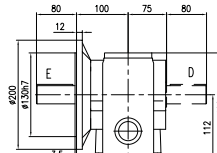
S205HK
S205HL



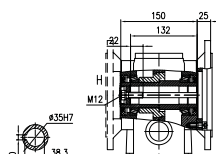
Flange-mounted (F)
Weight: 18kg (Without motor and oil)



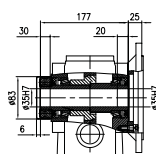
S205FA
S205FB
S205FC



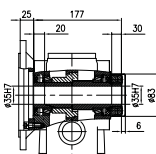
S205FD
S205FE
S205FF



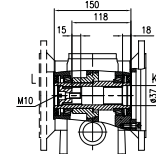
S205FG
S205FH



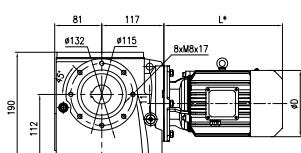
S205FI



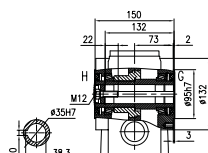
S205FJ



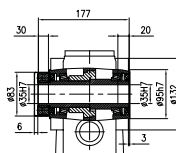
S205FK
S205FL



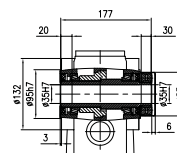
Short flange-mounted (S)
Weight: 15kg (Without motor and oil)



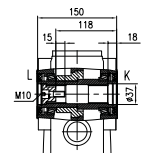
S205SG
S205SH



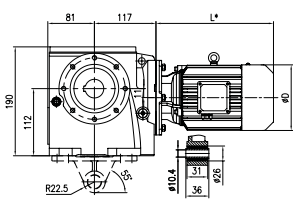
S205SI



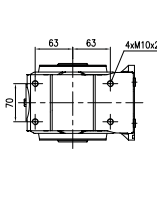
S205SJ



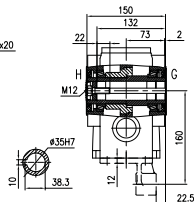
S205SK
S205SL



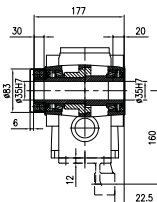
Torque arm-mounted with
accessory (T)
Weight: 17kg
(Without motor and oil)



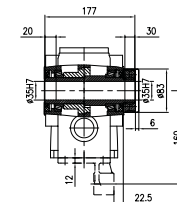
Torque arm-mounted without
accessory (A)
Weight: 15kg
(Without motor and oil)



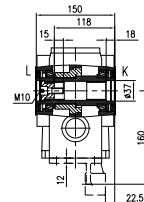
S205AG
S205AH
S205TG
S205TH



S205AI
S205TI



S205AJ
S205TJ



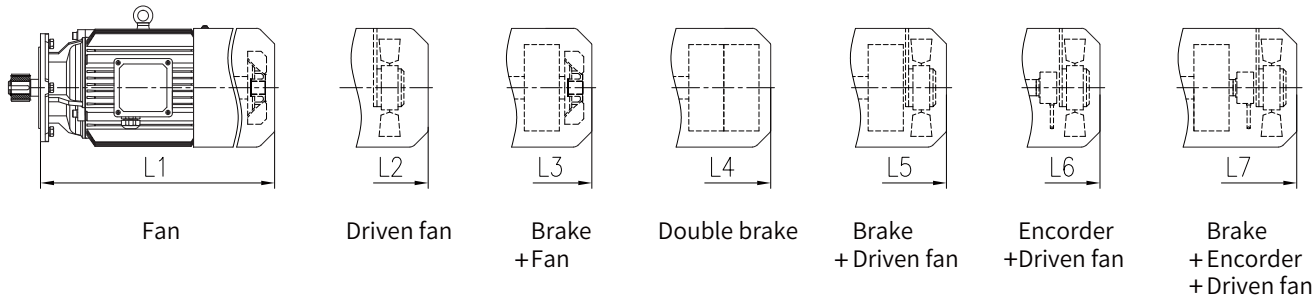
S205AK
S205AL
S205TK
S205TL

注:渐开线花键规格DIN5480:模数2×
齿数16×压力角30×大径35×9H

Note: Involute spline size DIN 5480:
m2×Z16×α30×D35×9H

配S205对应马达 的外形尺寸图表

Corresponding motor dimension table for S205



直联马达尺寸表

Directly connected motor dimension table

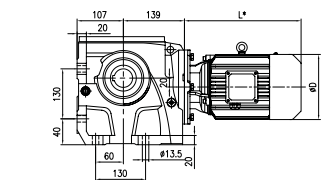
4极 4-pole 功率 power (kW) (kW)	适用 Range 速比 of 范围 Ratio	MS							MH							MP							MA							D
		L1	L2	L3	L4	L5	L6	L7	L1	L2	L3	L5	L6	L7	L1	L2	L3	L5	L6	L7	L1	L2	L3	L5	L6	L7				
0.12	8-224	/	262	242	/	297	/	/	207	262	242	297	/	/	207	262	242	297	/	/	207	262	242	297	/	/	124			
0.18	8-224	/	262	242	/	297	/	/	207	262	242	297	/	/	207	262	242	297	/	/	207	262	242	297	/	/	124			
0.25	8-224	/	269	264	/	314	314	354	224	269	264	314	314	354	224	269	264	314	314	354	224	274	264	319	319	359	139			
0.37	8-224	/	269	264	/	314	314	354	224	269	264	314	314	354	224	269	264	314	314	354	224	274	264	319	319	359	139			
0.55	8-180	300	345	360	420	405	405	455	300	345	360	405	405	455	300	345	360	405	405	455	300	345	360	405	405	450	162			
0.75	8-125	300	345	360	420	405	405	455	300	345	360	405	405	455	300	345	360	405	405	455	300	345	360	405	405	450	162			
1.1	8-80	323	368	378	438	423	423	478	323	368	378	423	423	478	323	368	378	423	423	478	348	393	403	453	453	498	176			
1.5	8-40	323	368	378	438	423	423	478	323	368	378	423	423	478	348	393	403	448	448	503	348	393	403	453	453	498	176			
2.2	8-25	395	435	470	530	510	510	565	395	435	470	510	510	565	395	435	470	510	510	565	395	450	470	530	530	575	202			

直联马达重量表/kg

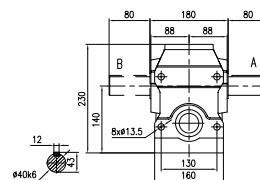
Directly connected motor weight table / kg

4极 4-pole 功率 power (kW) (kW)	适用 Range 速比 of 范围 Ratio	MS							MH							MP							MA						
		M1	M2	M3	M4	M5	M6	M7	M1	M2	M3	M5	M6	M7	M1	M2	M3	M5	M6	M7	M1	M2	M3	M5	M6	M7			
0.12	8-224	/	8	9	/	9	/	/	7	8	9	9	/	/	7	8	9	9	/	/	7	7.5	8.5	9	/	/			
0.18	8-224	/	8	9	/	9	/	/	7	8	9	9	/	/	8	9	10	10	/	/	8	8.5	9.5	10	/	/			
0.25	8-224	/	9	10	/	11	10	12	8	9	10	11	10	12	9	10	11	12	11	13	9	10	10.5	11.5	10.5	12.5			
0.37	8-224	/	10	11	/	12	11	13	9	10	11	12	11	13	10	11	12	13	12	14	10	11	11.5	12.5	11.5	13.5			
0.55	8-180	13	14	17	21	18	15	19	14	15	18	19	16	20	15	16	19	20	17	21	15	16	19	20	16.5	21			
0.75	8-125	14	15	18	22	19	16	20	15	16	19	20	17	21	16	17	20	21	18	22	16	17	20	21	17.5	22			
1.1	8-80	16	17	20	24	21	18	22	18	19	22	23	20	24	21	22	25	26	23	27	23	24	27	28	24.5	29			
1.5	8-40	17	18	21	25	22	19	23	19	20	23	24	21	25	23	24	27	28	25	29	23	24	27	28	24.5	29			
2.2	8-25	27	28	35	42	36	29	37	30	31	38	39	32	40	32	33	40	41	34	42	36	37	44	45	38	45			

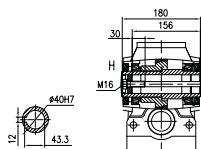
S206



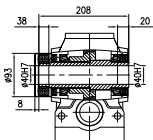
Horizontal foot-mounted (H)
Weight: 25kg (Without motor and oil)



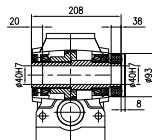
S206HA
S206HB
S206HC



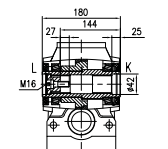
S206HG
S206HH



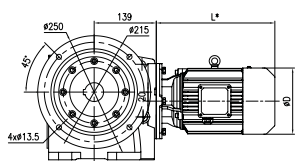
S206HI



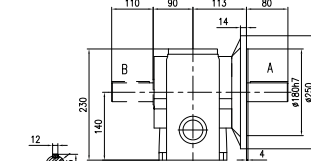
S206HJ



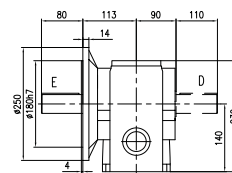
S206HK
S206HL



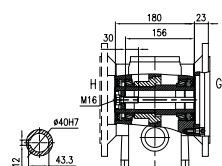
Flange-mounted (F)
Weight: 30kg (Without motor and oil)



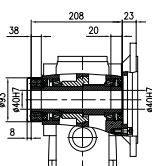
S206FA
S206FB
S206FC



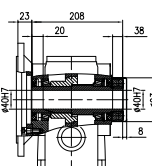
S206FD
S206FE
S206FF



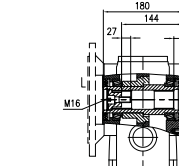
S206FG
S206FH



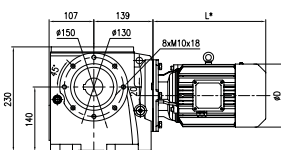
S206FI



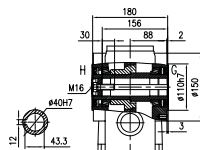
S206FJ



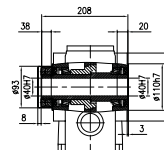
S206FK
S206FL



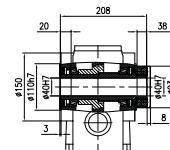
Short flange-mounted (S)
Weight: 25kg (Without motor and oil)



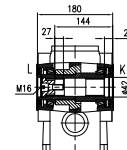
S206SG
S206SH



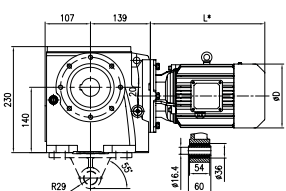
S206SI



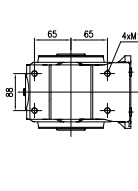
S206SJ



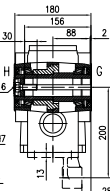
S206SK
S206SL



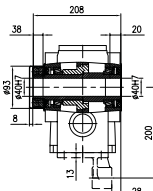
Torque arm-mounted with
accessory (T)
Weight: 28kg
(Without motor and oil)



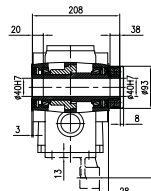
Torque arm-mounted without
accessory (A)
Weight: 25kg
(Without motor and oil)



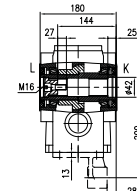
S206AG
S206AH
S206TG
S206TH



S206AI
S206TI



S206AJ
S206TJ



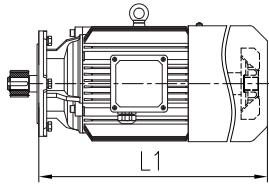
S206AK
S206AL
S206TK
S206TL

注:渐开线花键规格DIN5480:模数2×
齿数16×压力角30°×大径35×9H

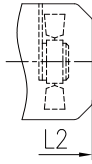
Note: Involute spline size DIN 5480:
m2×Z16×α30°×D35×9H

配S206对应马达 的外形尺寸图表

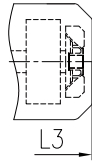
Corresponding motor dimension table for S206



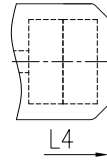
Fan



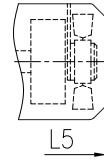
Driven fan



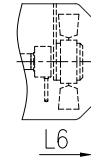
Brake
+ Fan



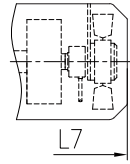
Double brake



Brake
+ Driven fan



Encoder
+ Driven fan



Brake
+ Encoder
+ Driven fan

直联马达尺寸表

Directly connected motor dimension table

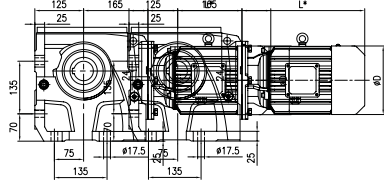
4极 4-pole 功率 power (kW) (kW)	适用 Range 速比 of 范围 Ratio	MS							MH							MP							MA							D
		L1	L2	L3	L4	L5	L6	L7	L1	L2	L3	L5	L6	L7	L1	L2	L3	L5	L6	L7	L1	L2	L3	L5	L6	L7				
0.18	180-315	/	262	242	/	297	/	/	207	262	242	297	/	/	207	262	242	297	/	/	207	262	242	297	/	/	124			
0.25	125-315	/	269	264	/	314	314	354	224	269	264	314	314	354	224	269	264	314	314	354	224	274	264	319	319	359	139			
0.37	80-315	/	269	264	/	314	314	354	224	269	264	314	314	354	224	269	264	314	314	354	224	274	264	319	319	359	139			
0.55	50-280	300	345	360	420	405	405	455	300	345	360	405	405	455	300	345	360	405	405	455	300	345	360	405	405	450	162			
0.75	28-224	300	345	360	420	405	405	455	300	345	360	405	405	455	300	345	360	405	405	455	300	345	360	405	405	450	162			
1.1	18-140	323	368	378	438	423	423	478	323	368	378	423	423	478	323	368	378	423	423	478	348	393	403	453	453	498	176			
1.5	10-100	323	368	378	438	423	423	478	323	368	378	423	423	478	348	393	403	448	448	503	348	393	403	453	453	498	176			
2.2	7.1-71	395	435	470	530	510	510	565	395	435	470	510	510	565	395	435	470	510	510	565	395	450	470	530	530	575	202			
3	7.1-40	395	435	470	530	510	510	565	395	435	470	510	510	565	395	435	470	510	510	565	395	450	470	530	530	575	202			
4	7.1-25	391	441	466	526	516	516	571	459	509	534	584	584	639	459	509	534	584	584	639	459	519	534	599	599	639	220			

直联马达重量表/kg

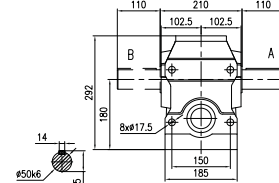
Directly connected motor weight table / kg

4极 4-pole 功率 power (kW) (kW)	适用 Range 速比 of 范围 Ratio	MS							MH							MP							MA						
		M1	M2	M3	M4	M5	M6	M7	M1	M2	M3	M5	M6	M7	M1	M2	M3	M5	M6	M7	M1	M2	M3	M5	M6	M7			
0.18	180-315	/	8	9	/	9	/	/	7	8	9	9	/	/	8	9	10	10	/	/	8	8.5	9.5	10	/	/			
0.25	125-315	/	9	10	/	11	10	12	8	9	10	11	10	12	9	10	11	12	11	13	9	10	10.5	11.5	10.5	12.5			
0.37	80-315	/	10	11	/	12	11	13	9	10	11	12	11	13	10	11	12	13	12	14	10	11	11.5	12.5	11.5	13.5			
0.55	50-280	13	14	17	21	18	15	19	14	15	18	19	16	20	15	16	19	20	17	21	15	16	19	20	16.5	21			
0.75	28-224	14	15	18	22	19	16	20	15	16	19	20	17	21	16	17	20	21	18	22	16	17	20	21	17.5	22			
1.1	18-140	16	17	20	24	21	18	22	18	19	22	23	20	24	21	22	25	26	23	27	23	24	27	28	24.5	29			
1.5	10-100	17	18	21	25	22	19	23	19	20	23	24	21	25	23	24	27	28	25	29	23	24	27	28	24.5	29			
2.2	7.1-71	27	28	35	42	36	29	37	30	31	38	39	32	40	32	33	40	41	34	42	36	37	44	45	38	45			
3	7.1-40	30	31	38	45	39	32	40	33	34	41	42	35	43	36	37	44	45	38	46	36	37	44	45	38	45			
4	7.1-25	45	46	53	61	54	47	55	52	53	60	61	54	62	56	57	64	65	58	66	56	57	64	65	58	66			

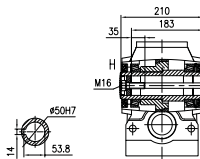
S207



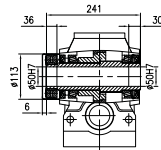
Horizontal foot-mounted (H)
Weight: 45kg (Without motor and oil)



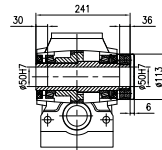
S207HA
S207HB
S207HC



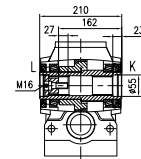
S207HG
S207HH



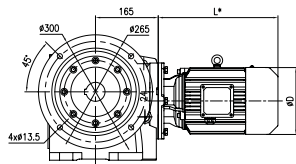
S207HI



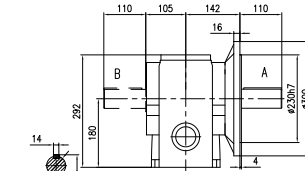
S207HJ



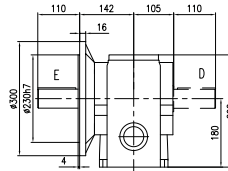
S207HK
S207HL



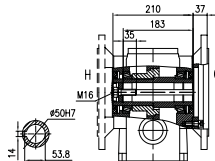
Flange-mounted (F)
Weight: 52.5kg (Without motor and oil)



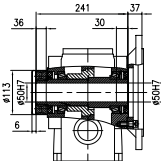
S207FA
S207FB
S207FC



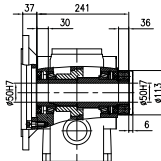
S207FD
S207FE
S207FF



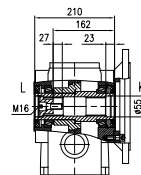
S207FG
S207FH



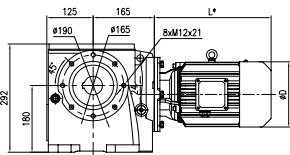
S207FI



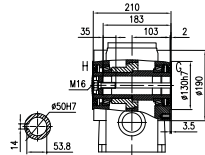
S207FJ



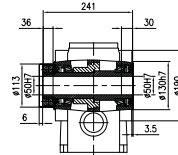
S207FK
S207FL



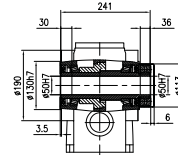
Short flange-mounted (S)
Weight: 45kg (Without motor and oil)



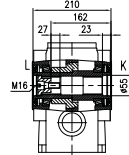
S207SG
S207SH



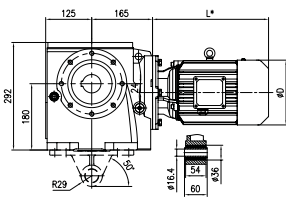
S207SI



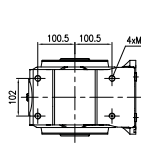
S207SJ



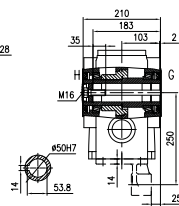
S207SK
S207SL



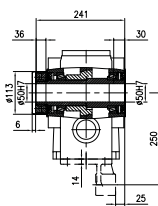
Torque arm-mounted with
accessory (T)
Weight: 50kg
(Without motor and oil)



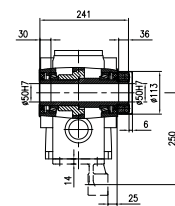
Torque arm-mounted without
accessory (A)
Weight: 45kg
(Without motor and oil)



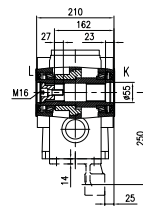
S207AG
S207AH
S207TG
S207TH



S207AI
S207TI



S207AJ
S207TJ



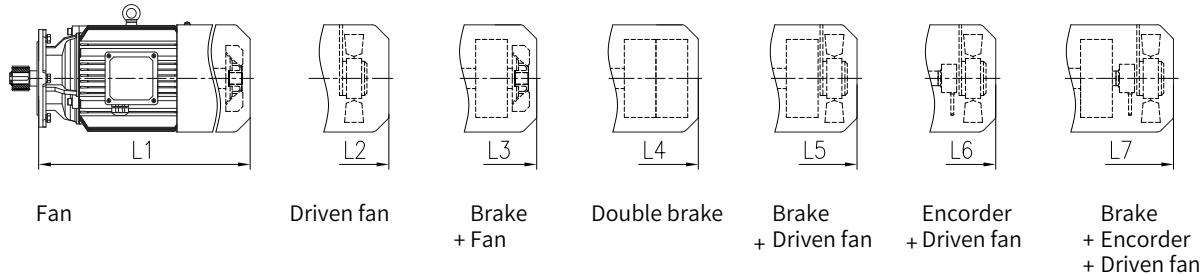
S207AK
S207AL
S207TK
S207TL

注:渐开线花键规格DIN5480:模数2×
齿数24×压力角30°大径50×9H

Note: Involute spline size DIN 5480:
m2×24×α30×D50×9H

配S207对应马达 的外形尺寸图表

Corresponding motor dimension table for S207



直联马达尺寸表

Directly connected motor dimension table

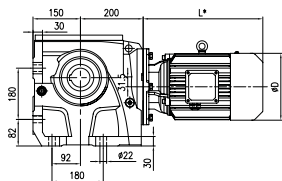
4极 功率 (kW)	4-pole power (kW)	适用 速比 范围	Range of Ratio	MS							MH							MP							MA							D
				L1	L2	L3	L4	L5	L6	L7	L1	L2	L3	L4	L5	L6	L7	L1	L2	L3	L5	L6	L7	L1	L2	L3	L5	L6	L7			
0.37		224-355	/	261	256	/	306	306	346	216	261	256	/	306	306	346	216	261	256	306	306	346	216	266	256	311	311	351	139			
0.55		140-355	292	337	352	412	397	397	447	292	337	352	/	397	397	447	292	337	352	397	397	447	292	337	352	397	397	442	162			
0.75		80-355	292	337	352	412	397	397	447	292	337	352	/	397	397	447	292	337	352	397	397	447	292	337	352	397	397	442	162			
1.1		50-250	315	360	370	430	415	415	470	315	360	370	/	415	415	470	315	360	370	415	415	470	340	385	395	445	445	490	176			
1.5		35.5-250	315	360	370	430	415	415	470	315	360	370	/	415	415	470	340	385	395	440	440	495	340	385	395	445	445	490	176			
2.2		22.4-200	387	427	462	522	502	502	557	387	427	462	/	502	502	557	387	427	462	502	502	557	387	442	462	522	522	567	202			
3		11.2-125	387	427	462	522	502	502	557	387	427	462	/	502	502	557	387	427	462	502	502	557	387	442	462	522	522	567	202			
4		8-80	383	433	458	518	508	508	563	451	501	526	/	576	576	631	451	501	526	576	576	631	451	511	526	591	591	631	220			
5.5		8-40	421	471	501	566	546	546	601	421	471	501	/	546	546	601	459	509	539	584	584	639	497	562	577	647	647	677	259			
7.5		8-35.5	459	509	539	604	584	584	639	459	509	539	/	584	584	639	497	547	577	622	622	677	497	562	577	647	647	677	259			

直联马达重量表/kg

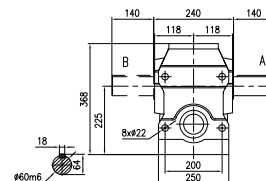
Directly connected motor weight table / kg

4极 功率 (kW)	4-pole power (kW)	适用 速比 范围	Range of Ratio	MS							MH							MP							MA						
				M1	M2	M3	M4	M5	M6	M7	M1	M2	M3	M4	M5	M6	M7	M1	M2	M3	M5	M6	M7	M1	M2	M3	M5	M6	M7		
0.37		224-355	/	10	11	/	12	11	13	9	10	11	/	12	11	13	10	11	12	13	12	14	10	11	11.5	12.5	11.5	13.5			
0.55		140-355	13	14	17	21	18	15	19	14	15	18	/	19	16	20	15	16	19	20	17	21	15	16	19	20	16.5	21			
0.75		80-355	14	15	18	22	19	16	20	15	16	19	/	20	17	21	16	17	20	21	18	22	16	17	20	21	17.5	22			
1.1		50-250	16	17	20	24	21	18	22	18	19	22	/	23	20	24	21	22	25	26	23	27	23	24	27	28	24.5	29			
1.5		35.5-250	17	18	21	25	22	19	23	19	20	23	/	24	21	25	23	24	27	28	25	29	23	24	27	28	24.5	29			
2.2		22.4-200	27	28	35	42	36	29	37	30	31	38	/	39	32	40	32	33	40	41	34	42	36	37	44	45	38	45			
3		11.2-125	30	31	38	45	39	32	40	33	34	41	/	42	35	43	36	37	44	45	38	46	36	37	44	45	38	45			
4		8-80	45	46	53	61	54	47	55	52	53	60	/	61	54	62	56	57	64	65	58	66	56	57	64	65	58	66			
5.5		8-40	63	65	74	85	76	66	77	67	69	78	/	80	70	81	77	79	88	90	80	91	88	90	99	101	91	102			
7.5		8-35.5	73	75	84	95	86	76	87	80	82	91	/	93	83	94	88	90	99	101	91	102	88	90	99	101	91	102			

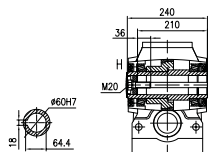
S208



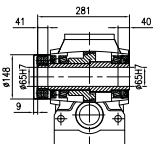
Horizontal foot-mounted (H)
Weight: 85kg (Without motor and oil)



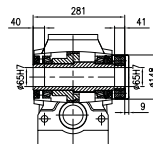
S208HA
S208HB
S208HC



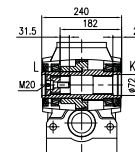
S208HG
S208HH



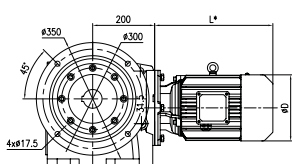
S208HI



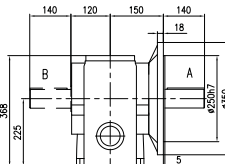
S208HJ



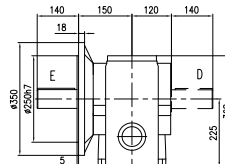
S208HK
S208HL



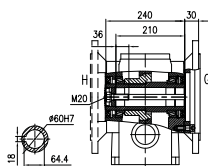
Flange-mounted (F)
Weight: 98kg (Without motor and oil)



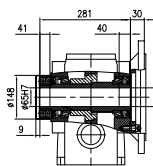
S208FA
S208FB
S208FC



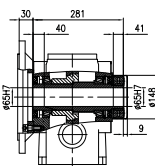
S208FD
S208FE
S208FF



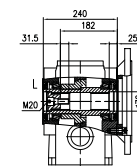
S208FG
S208FH



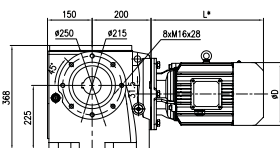
S208FI



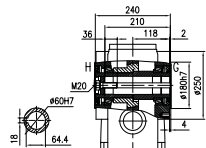
S208FJ



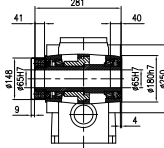
S208FK
S208FL



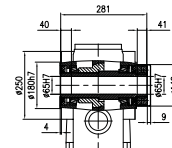
Short flange-mounted (S)
Weight: 85kg (Without motor and oil)



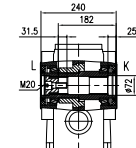
S208SG
S208SH



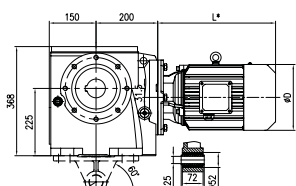
S208SI



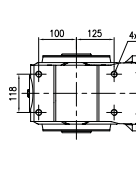
S208SJ



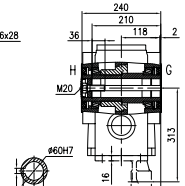
S208SK
S208SL



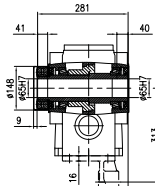
Torque arm-mounted with
accessory (T)
Weight: 95kg
(Without motor and oil)



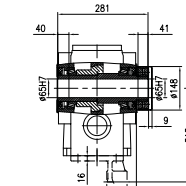
Torque arm-mounted without
accessory (A)
Weight: 85kg
(Without motor and oil)



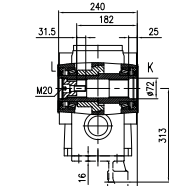
S208AG
S208AH
S208TG
S208TH



S208AI
S208TI



S208AJ
S208TJ



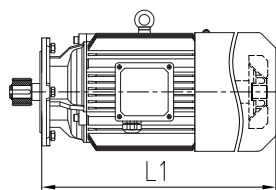
S208AK
S208AL
S208TK
S208TL

注:渐开线花键规格DIN5480:模数2×
齿数31×压力角30°×大径65×9H

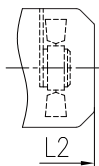
Note: Involute spline size DIN 5480:
m2×Z31×α30°×D65×9H

配S208对应马达 的外形尺寸图表

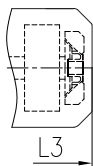
Corresponding motor dimension table for S208



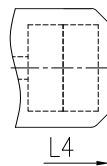
Fan



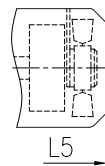
Driven fan



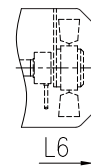
Brake
+ Fan



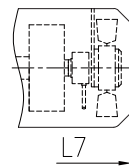
Double brake



Brake
+ Driven fan



Encoder
+ Driven fan



Brake
+ Encoder
+ Driven fan

直联马达尺寸表

Directly connected motor dimension table

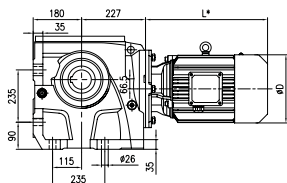
4极 功率 (kW)	4-pole power (kW)	适用 范围	Range of Ratio	MS							MH							MP							MA							D
				L1	L2	L3	L4	L5	L6	L7	L1	L2	L3	L4	L5	L6	L7	L1	L2	L3	L4	L5	L6	L7	L1	L2	L3	L4	L5	L6	L7	
0.55		250-500		283	328	343	403	388	388	438	283	328	343	/	388	388	438	283	328	343	388	388	438	283	328	343	388	388	433	162		
0.75		180-500		283	328	343	403	388	388	438	283	328	343	/	388	388	438	283	328	343	388	388	438	283	328	343	388	388	433	162		
1.1		100-315		306	351	361	421	406	406	461	306	351	361	/	406	406	461	306	351	361	406	406	461	331	376	386	436	436	481	176		
1.5		50-315		306	351	361	421	406	406	461	306	351	361	/	406	406	461	331	376	386	431	431	486	331	376	386	436	436	481	176		
2.2		31.5-315		378	418	453	513	493	493	548	378	418	453	/	493	493	548	378	418	453	493	493	548	378	433	453	513	513	558	202		
3		25-250		378	418	453	513	493	493	548	378	418	453	/	493	493	548	378	418	453	493	493	548	378	433	453	513	513	558	202		
4		12.5-180		374	424	449	509	499	499	554	442	492	517	/	567	567	622	442	492	517	567	567	622	442	502	517	582	582	622	220		
5.5		10-100		413	463	493	558	538	538	593	413	463	493	/	538	538	593	451	501	531	576	576	631	489	554	569	639	639	669	259		
7.5		10-50		451	501	531	596	576	576	631	451	501	531	/	576	576	631	489	539	569	614	614	669	489	554	569	639	639	669	259		
11		10-31.5		/	541	601	/	631	631	681	506	541	601	651	631	631	681	550	585	645	675	675	725	550	600	645	700	700	735	314		
15		10-25		/	585	645	/	675	675	725	550	585	645	695	675	675	725	580	615	675	705	705	755	580	630	675	730	730	765	314		

直联马达重量表/kg

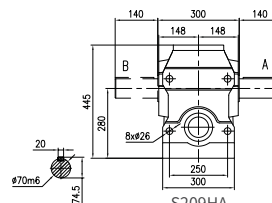
Directly connected motor weight table / kg

4极 功率 (kW)	4-pole power (kW)	适用 范围	Range of Ratio	MS							MH							MP							MA						
				M1	M2	M3	M4	M5	M6	M7	M1	M2	M3	M4	M5	M6	M7	M1	M2	M3	M4	M5	M6	M7	M1	M2	M3	M4	M5	M6	M7
0.55		250-500		13	14	17	21	18	15	19	14	15	18	/	19	16	20	15	16	19	20	17	21	15	16	19	20	16.5	21		
0.75		180-500		14	15	18	22	19	16	20	15	16	19	/	20	17	21	16	17	20	21	18	22	16	17	20	21	17.5	22		
1.1		100-315		16	17	20	24	21	18	22	18	19	22	/	23	20	24	21	22	25	26	23	27	23	24	27	28	24.5	29		
1.5		50-315		17	18	21	25	22	19	23	19	20	23	/	24	21	25	23	24	27	28	25	29	23	24	27	28	24.5	29		
2.2		31.5-315		27	28	35	42	36	29	37	30	31	38	/	39	32	40	32	33	40	41	34	42	36	37	44	45	38	45		
3		25-250		30	31	38	45	39	32	40	33	34	41	/	42	35	43	36	37	44	45	38	46	36	37	44	45	38	45		
4		12.5-180		45	46	53	61	54	47	55	52	53	60	/	61	54	62	56	57	64	65	58	66	56	57	64	65	58	66		
5.5		10-100		63	65	74	85	76	66	77	67	69	78	/	80	70	81	77	79	88	90	80	91	88	90	99	101	91	102		
7.5		10-50		73	75	84	95	86	76	87	80	82	91	/	93	83	94	88	90	99	101	91	102	88	90	99	101	91	102		
11		10-31.5		/	123	142	/	143	124	144	121	123	142	162	143	124	144	129	131	150	151	132	152	129	131	150	151	132	152		
15		10-25		/	141	160	/	161	142	162	139	141	160	180	161	142	162	161	163	182	183	164	184	161	163	182	183	164	184		

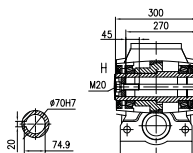
S209



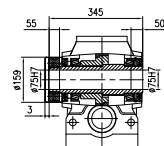
Horizontal foot-mounted (H)
Weight: 150kg (Without motor and oil)



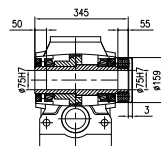
S209HA
S209HB
S209HC



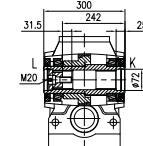
S209HG
S209HH



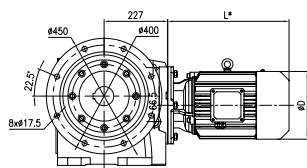
S209HI



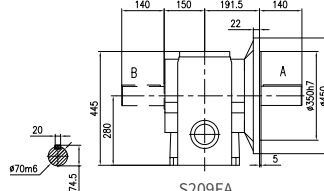
S209HJ



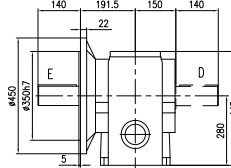
S209HK
S209HL



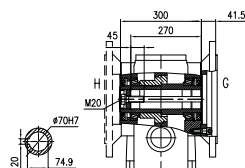
Flange-mounted (F)
Weight: 175kg (Without motor and oil)



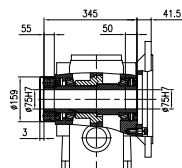
S209FA
S209FB
S209FC



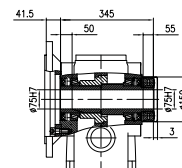
S209FD
S209FE
S209FF



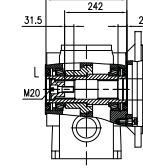
S209FG
S209FH



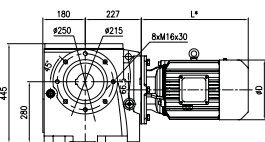
S209FI



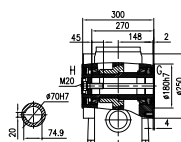
S209FJ



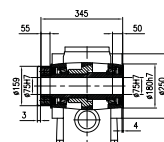
S209FK
S209FL



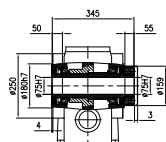
Short flange-mounted (S)
Weight: 150kg (Without motor and oil)



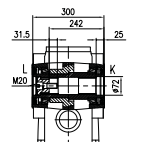
S209SG
S209SH



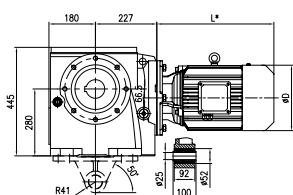
S209SI



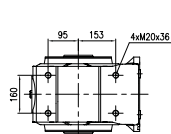
S209SJ



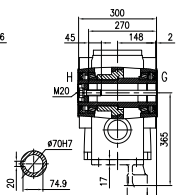
S209SK
S209SL



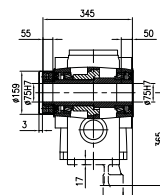
Torque arm-mounted with
accessory (T)
Weight: 165kg
(Without motor and oil)



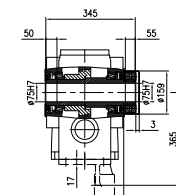
Torque arm-mounted without
accessory (A)
Weight: 150kg
(Without motor and oil)



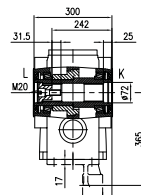
S209AG
S209AH
S209TG
S209TH



S209AI
S209TI



S209AJ
S209TJ



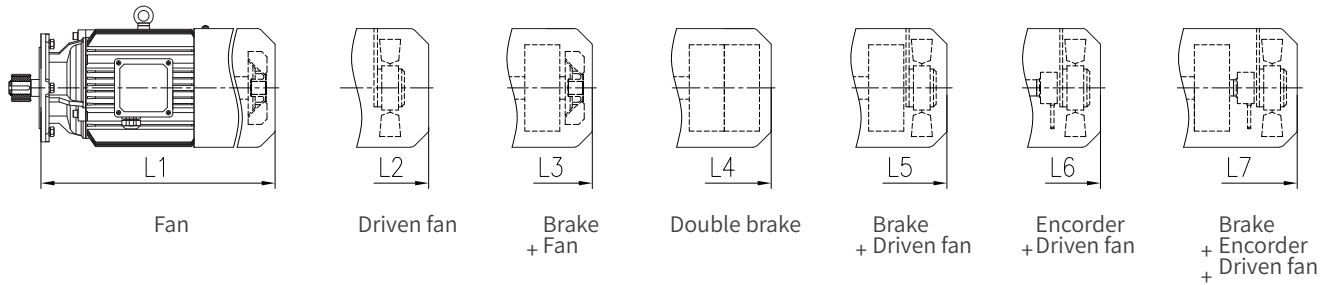
S209AK
S209AL
S209TK
S209TL

注:渐开线花键规格DIN5480:模数2×
齿数34×压力角30×大径70×9H

Note: Involute spline size DIN 5480:
m2×Z34×α30×D70×9H

**配S209对应马达
的外形尺寸图表**

**Corresponding motor
dimension table for S209**



直联马达尺寸表

Directly connected motor dimension table

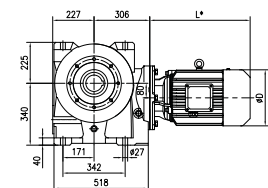
4极 功率 (kW)	4-pole power (kW)	适用 速比 范围	Range		MS							MH							MP							MA							D
			of	Ratio	L1	L2	L3	L4	L5	L6	L7	L1	L2	L3	L4	L5	L6	L7	L1	L2	L3	L4	L5	L6	L7	L1	L2	L3	L4	L5	L6	L7	
0.75		315-500			280	325	340	400	385	385	435	280	325	340	/	385	385	435	280	325	340	385	385	435	280	325	340	385	385	430	162		
1.1		224-315			303	348	358	418	403	403	458	303	348	358	/	403	403	458	303	348	358	403	403	458	328	373	383	433	433	478	176		
1.5		160-315			303	348	358	418	403	403	458	303	348	358	/	403	403	458	328	373	383	428	428	483	328	373	383	433	433	478	176		
2.2		90-315			374	414	449	509	489	489	544	374	414	449	/	489	489	544	374	414	449	489	489	544	374	429	449	509	509	554	202		
3		63-315			374	414	449	509	489	489	544	374	414	449	/	489	489	544	374	414	449	489	489	544	374	429	449	509	509	554	202		
4		40-315			370	420	445	505	495	495	550	370	420	445	/	563	563	618	438	488	513	563	563	618	438	498	513	578	578	618	220		
5.5		20-160			412	462	492	557	537	537	592	412	462	492	/	537	537	592	450	500	530	575	575	630	488	553	568	638	638	668	259		
7.5		18-160			450	500	530	595	575	575	630	450	500	530	/	575	575	630	488	538	568	613	613	668	488	553	568	638	638	668	259		
11		18-90			/	535	595	/	625	625	675	500	535	595	645	625	625	675	544	579	639	669	669	719	544	594	639	694	694	729	314		
15		18-63			/	579	639	/	669	669	719	544	579	639	689	669	669	719	574	609	669	699	699	749	574	624	669	724	724	759	314		
18.5		18-40			/	645	725	/	750	750	795	615	645	725	780	725	750	795	615	645	725	750	750	795	615	660	725	770	770	810	356		
22		18-31.5			/	693	773	/	798	798	843	663	693	773	828	773	798	843	663	693	773	798	798	843	663	708	773	818	818	858	356		

直联马达重量表/kg

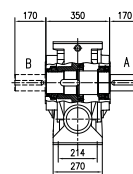
Directly connected motor weight table / kg

4极 功率 (kW)	4-pole power (kW)	适用 速比 范围	Range		MS							MH							MP							MA						
			of	Ratio	M1	M2	M3	M4	M5	M6	M7	M1	M2	M3	M4	M5	M6	M7	M1	M2	M3	M4	M5	M6	M7	M1	M2	M3	M4	M5	M6	M7
0.75		315-500			14	15	18	22	19	16	20	15	16	19	/	20	17	21	16	17	20	21	18	22	16	17	20	21	17.5	22		
1.1		224-315			16	17	20	24	21	18	22	18	19	22	/	23	20	24	20	21	24	25	22	26	23	24	27	28	24.5	29		
1.5		160-315			17	18	21	25	22	19	23	19	20	23	/	24	21	25	22	23	26	27	24	28	23	24	27	28	24.5	29		
2.2		90-315			27	28	35	42	36	29	37	30	31	38	/	39	32	40	32	33	40	41	34	42	36	37	44	45	38	45		
3		63-315			30	31	38	45	39	32	40	33	34	41	/	42	35	43	36	37	44	45	38	46	36	37	44	45	38	45		
4		40-315			45	46	53	61	54	47	55	52	53	60	/	61	54	62	56	57	64	65	58	66	56	57	64	65	58	66		
5.5		20-160			63	65	74	85	76	66	77	67	69	78	/	80	70	81	77	79	88	90	80	91	88	90	99	101	91	102		
7.5		18-160			73	75	84	95	86	76	87	80	82	91	/	93	83	94	88	90	99	101	91	102	88	90	99	101	91	102		
11		18-90			/	123	142	/	143	124	144	121	123	142	162	143	124	144	129	131	150	151	132	152	129	131	150	151	132	152		
15		18-63			/	141	160	/	161	142	162	139	141	160	180	161	142	162	161	163	182	183	164	184	161	163	182	183	164	184		
18.5		18-40			/	184	214	/	215	185	217	182	184	214	246	215	185	217	200	202	232	233	203	235	200	202	232	233	203	235		
22		18-31.5			/	206	236	/	237	207	239	204	206	236	268	237	207	239	220	222	252	253	223	255	220	222	252	253	223	255		

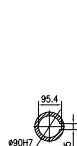
S210



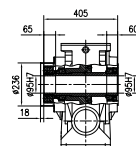
Horizontal foot-mounted (H)
Weight: 235kg (Without motor and oil)



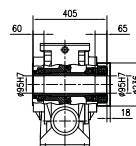
S210HA
S210HB
S210HC



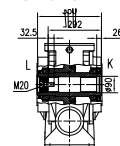
S210HG
S210HH



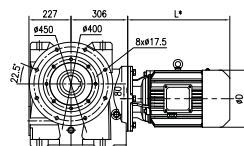
S210HI



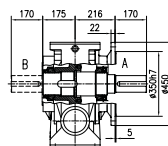
S210HJ



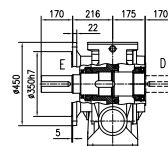
S210HK
S210HL



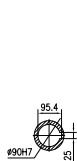
Flange-mounted (F)
Weight: 250kg (Without motor and oil)



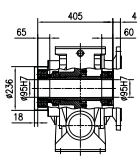
S210FA
S210FB
S210FC



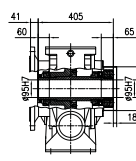
S210FD
S210FE
S210FF



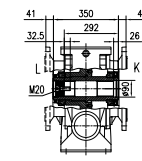
S210FG
S210FH



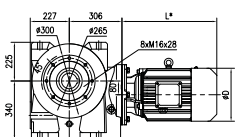
S210FI



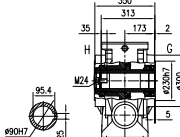
S210FJ



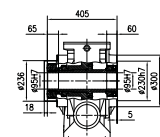
S210FK
S210FL



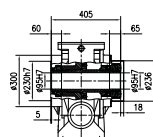
Short flange-mounted (S)
Weight: 235kg (Without motor and oil)



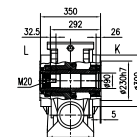
S210SG
S210SH



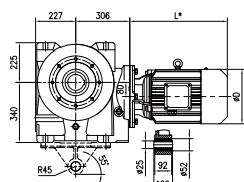
S210SI



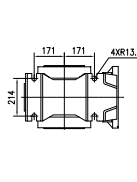
S210SJ



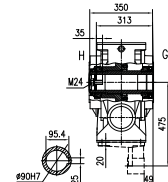
S210SK
S210SL



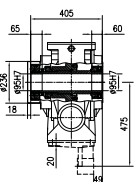
Torque arm-mounted with
accessory (T)
Weight: 260kg
(Without motor and oil)



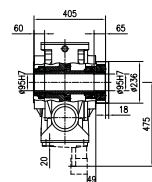
Torque arm-mounted without
accessory (A)
Weight: 235kg
(Without motor and oil)



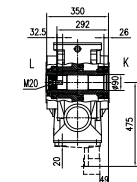
S210AG
S210AH
S210TG
S210TH



S210AI
S210TI



S210AJ
S210TJ



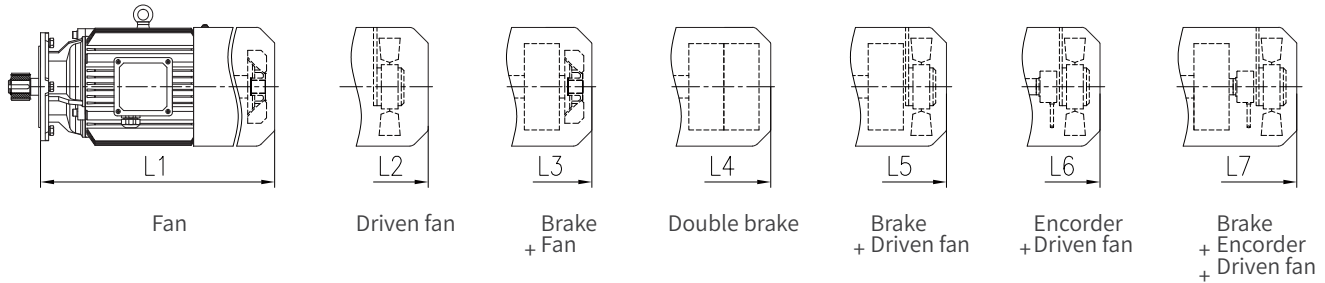
S210AK
S210AL
S210TK
S210TL

注:渐开线花键规格DIN5480:模数3×
齿数27×压力角30°×大径85×9H

Note: Involute spline size DIN 5480:
m3×Z27×α30°×D85×9H

**配S210对应马达
的外形尺寸图表**

**Corresponding motor
dimension table for S210**



直联马达尺寸表

Directly connected motor dimension table

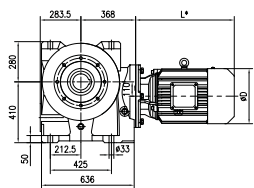
4极 4-pole 功率 power (kW) (kW)	适用 Range 速比 of 范围 Ratio	MS							MH							MP							MA							D
		L1	L2	L3	L4	L5	L6	L7	L1	L2	L3	L4	L5	L6	L7	L1	L2	L3	L5	L6	L7	L1	L2	L3	L5	L6	L7			
1.5	250-400	300	345	355	415	400	400	455	300	345	355	/	400	400	455	325	370	380	425	425	480	325	370	380	430	430	475	176		
2.2	160-400	370	410	445	505	485	485	540	370	410	445	/	485	485	540	370	410	445	485	485	540	370	425	445	505	505	550	202		
3	100-400	370	410	445	505	485	485	540	370	410	445	/	485	485	540	370	410	445	485	485	540	370	425	445	505	505	550	202		
4	63-400	366	416	441	501	491	491	546	434	484	509	/	559	559	614	434	484	509	559	559	614	434	494	509	574	574	614	220		
5.5	40-224	401	451	481	546	526	526	581	401	451	481	/	526	526	581	439	489	519	564	564	619	477	542	557	627	627	657	259		
7.5	28-224	439	489	519	584	564	564	619	439	489	519	/	564	564	619	477	527	557	602	602	657	477	542	557	627	627	657	259		
11	18-160	/	524	584	/	614	614	664	489	524	584	634	614	614	664	533	568	628	658	658	708	533	583	628	683	683	718	314		
15	18-100	/	568	628	/	658	658	708	533	568	628	678	658	658	708	563	598	658	688	688	738	563	613	658	713	713	748	314		
18.5	18-71	/	634	714	/	739	739	784	604	634	714	769	714	739	784	604	634	714	739	739	784	604	649	714	759	759	799	356		
22	18-63	/	682	762	/	787	787	832	652	682	762	817	762	787	832	652	682	762	787	787	832	652	697	762	807	807	847	356		
30	18-35.5	/	710	820	/	825	825	870	705	710	820	845	825	825	870	705	710	820	825	825	870	705	725	820	845	845	890	398		

直联马达重量表/kg

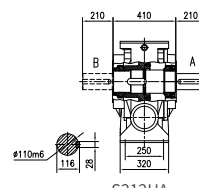
Directly connected motor weight table / kg

4极 4-pole 功率 power (kW) (kW)	适用 Range 速比 of 范围 Ratio	MS							MH							MP							MA						
		M1	M2	M3	M4	M5	M6	M7	M1	M2	M3	M4	M5	M6	M7	M1	M2	M3	M5	M6	M7	M1	M2	M3	M5	M6	M7		
1.5	250-400	17	18	21	25	22	19	23	19	20	23	/	24	21	25	23	24	27	28	25	29	23	24	27	28	24.5	29		
2.2	160-400	27	28	35	42	36	29	37	30	31	38	/	39	32	40	32	33	40	41	34	42	36	37	44	45	38	45		
3	100-400	30	31	38	45	39	32	40	33	34	41	/	42	35	43	36	37	44	45	38	46	36	37	44	45	38	45		
4	63-400	45	46	53	61	54	47	55	52	53	60	/	61	54	62	56	57	64	65	58	66	56	57	64	65	58	66		
5.5	40-224	63	65	74	85	76	66	77	67	69	78	/	80	70	81	77	79	88	90	80	91	88	90	99	101	91	102		
7.5	28-224	73	75	84	95	86	76	87	80	82	91	/	93	83	94	88	90	99	101	91	102	88	90	99	101	91	102		
11	18-160	/	123	142	/	143	124	144	121	123	142	162	143	124	144	129	131	150	151	132	152	129	131	150	151	132	152		
15	18-100	/	141	160	/	161	142	162	139	141	160	180	161	142	162	161	163	182	183	164	184	161	163	182	183	164	184		
18.5	18-71	/	184	214	/	215	185	217	182	184	214	246	215	185	217	200	202	232	233	203	235	200	202	232	233	203	235		
22	18-63	/	206	236	/	237	207	239	204	206	236	268	237	207	239	220	222	252	253	223	255	220	222	252	253	223	255		
30	18-35.5	/	260	310	/	308	261	310	260	260	310	360	308	261	310	280	280	330	328	281	330	280	280	330	328	281	330		

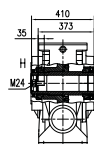
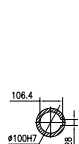
S212



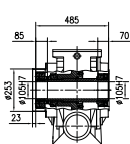
Horizontal foot-mounted (H)
Weight: 390kg (Without motor and oil)



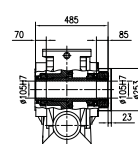
S212HA
S212HB
S212HC



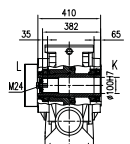
S212HG
S212HH



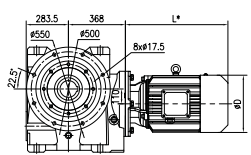
S212HI



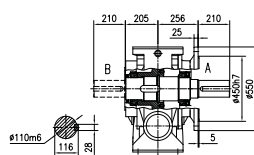
S212HJ



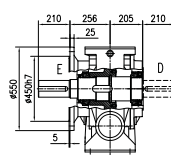
S212HK
S212HL



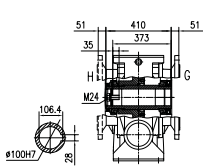
Flange-mounted (F)
Weight: 425kg (Without motor and oil)



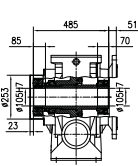
S212FA
S212FB
S212FC



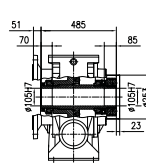
S212FD
S212FE
S212FF



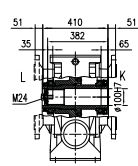
S212FG
S212FH



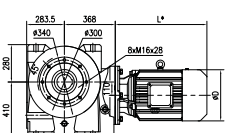
S212FI



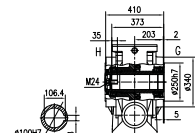
S212FJ



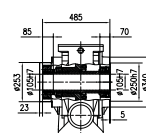
S212FK
S212FL



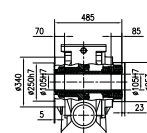
Short flange-mounted (S)
Weight: 390kg (Without motor and oil)



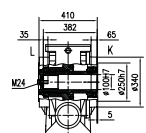
S212SG
S212SH



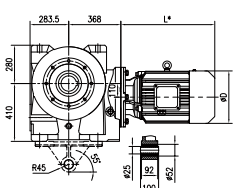
S212SI



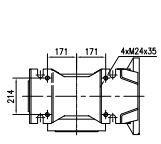
S212SJ



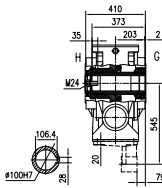
S212SK
S212SL



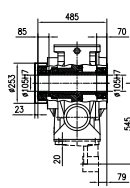
Torque arm-mounted
with accessory (T)
Weight: 415kg
(Without motor and oil)



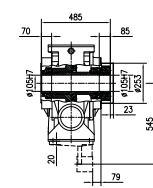
Torque arm-mounted
without accessory (A)
Weight: 390kg
(Without motor and oil)



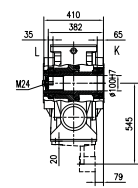
S212AG
S212AH
S212TG
S212TH



S212AI
S212TI



S212AJ
S212TJ



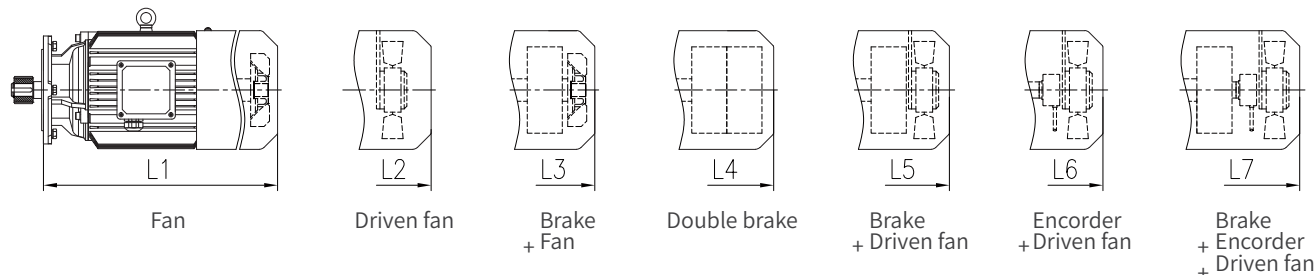
S212AK
S212AL
S212TK
S212TL

注:渐开线花键规格DIN5480:模数3×
齿数30×压力角30×大径95×9H

Note: Involute spline size DIN 5480:
m3×Z30×α30×D95×9H

**配S212对应马达
的外形尺寸图表**

**Corresponding motor
dimension table for S212**



直联马达尺寸表

Directly connected motor dimension table

4极 4-pole 功率 power (kW) (kW)	适用 Range 速比 of 范围 Ratio	MS							MH							MP							MA							D
		L1	L2	L3	L4	L5	L6	L7	L1	L2	L3	L4	L5	L6	L7	L1	L2	L3	L5	L6	L7	L1	L2	L3	L5	L6	L7			
2.2	280-450	359	399	434	494	474	474	529	359	399	434	/	474	474	529	359	399	434	474	474	529	359	414	434	494	494	539	202		
3	200-450	359	399	434	494	474	474	529	359	399	434	/	474	474	529	359	399	434	474	474	529	359	414	434	494	494	539	202		
4	140-450	355	405	430	490	480	480	535	423	473	498	/	548	548	603	423	473	498	548	548	603	423	483	498	563	563	603	220		
5.5	100-250	391	441	471	536	516	516	571	391	441	471	/	516	516	571	429	479	509	554	554	609	467	532	547	617	617	647	259		
7.5	63-250	429	479	509	574	554	554	609	429	479	509	/	554	554	609	467	517	547	592	592	647	467	532	547	617	617	647	259		
11	35.5-250	/	508	568	/	598	598	648	473	508	568	618	598	598	648	517	552	612	642	642	692	517	567	612	667	667	702	314		
15	20-200	/	552	612	/	642	642	692	517	552	612	662	642	642	692	547	582	642	672	672	722	547	597	642	697	697	732	314		
18.5	18-160	/	618	698	/	723	723	768	588	618	698	753	698	723	768	588	618	698	723	723	768	588	633	698	743	743	783	356		
22	18-140	/	666	746	/	771	771	816	636	666	746	801	746	771	816	636	666	746	771	771	816	636	681	746	791	791	831	356		
30	18-80	/	689	799	/	804	804	849	684	689	799	824	804	804	849	684	689	799	804	804	849	684	704	799	824	824	869	398		
37	18-63	/	755	840	/	870	870	915	725	755	840	/	870	870	915	725	755	840	870	870	915	725	760	840	880	880	920	446		
45	18-45	/	755	840	/	870	870	915	725	755	840	/	870	870	915	725	755	840	870	870	915	725	760	840	880	880	920	446		
55	18-35.5	/	856	981	/	991	991	1026	841	856	981	/	991	991	1036	841	856	981	991	991	1036	841	866	981	1021	1021	1041	485		

直联马达重量表/kg

Directly connected motor weight table / kg

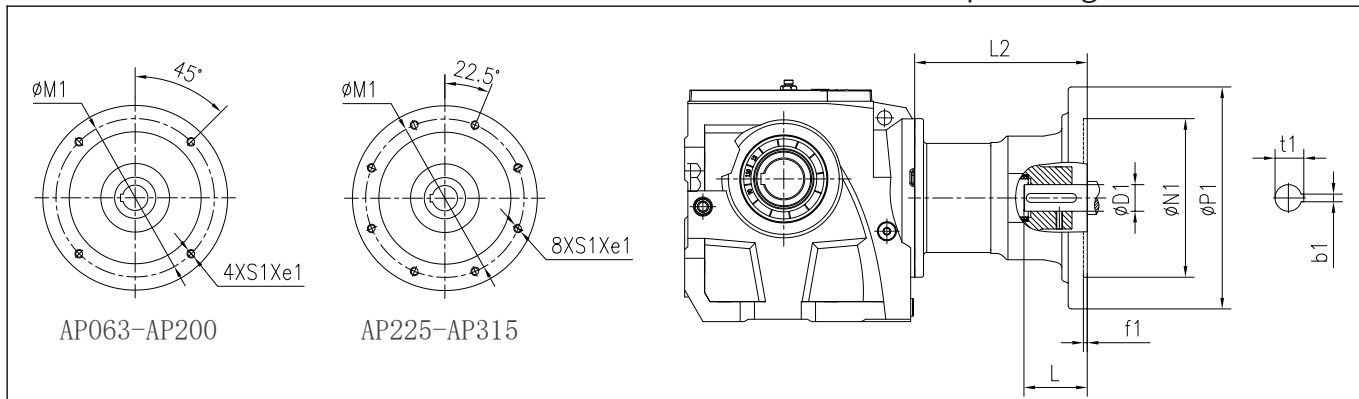
4极 4-pole 功率 power (kW) (kW)	适用 Range 速比 of 范围 Ratio	MS							MH							MP							MA						
		M1	M2	M3	M4	M5	M6	M7	M1	M2	M3	M4	M5	M6	M7	M1	M2	M3	M5	M6	M7	M1	M2	M3	M5	M6	M7		
2.2	280-450	27	28	35	42	36	29	37	30	31	38	/	39	32	40	32	33	40	41	34	42	36	37	44	45	38	45		
3	200-450	30	31	38	45	39	32	40	33	34	41	/	42	35	43	36	37	44	45	38	46	36	37	44	45	38	45		
4	140-450	45	46	53	61	54	47	55	52	53	60	/	61	54	62	56	57	64	65	58	66	56	57	64	65	58	66		
5.5	100-250	63	65	74	85	76	66	77	67	69	78	/	80	70	81	77	79	88	90	80	91	88	90	99	101	91	102		
7.5	63-250	73	75	84	95	86	76	87	80	82	91	/	93	83	94	88	90	99	101	91	102	88	90	99	101	91	102		
11	35.5-250	/	123	142	/	143	124	144	121	123	142	162	143	124	144	129	131	150	151	132	152	129	131	150	151	132	152		
15	20-200	/	141	160	/	161	142	162	139	141	160	180	161	142	162	161	163	182	183	164	184	161	163	182	183	164	184		
18.5	18-160	/	184	214	/	215	185	217	182	184	214	246	215	185	217	200	202	232	233	203	235	200	202	232	233	203	235		
22	18-140	/	206	236	/	237	207	239	204	206	236	268	237	207	239	220	222	252	253	223	255	220	222	252	253	223	255		
30	18-80	/	260	310	/	308	261	310	260	260	310	360	308	261	310	280	280	330	328	281	330	280	280	330	328	281	330		
37	18-63	/	332	380	/	381	334	383	330	332	380	/	381	334	383	345	347	395	396	349	398	345	347	395	396	349	398		
45	18-45	/	347	395	/	396	349	398	345	347	395	/	396	349	398	365	367	415	416	369	418	365	367	415	416	369	418		
55	18-35.5	/	436	540	/	535	436	537	435	436	540	/	535	436	537	470	471	575	570	471	572	470	471	575	570	470	572		

7 输入法兰和输入轴

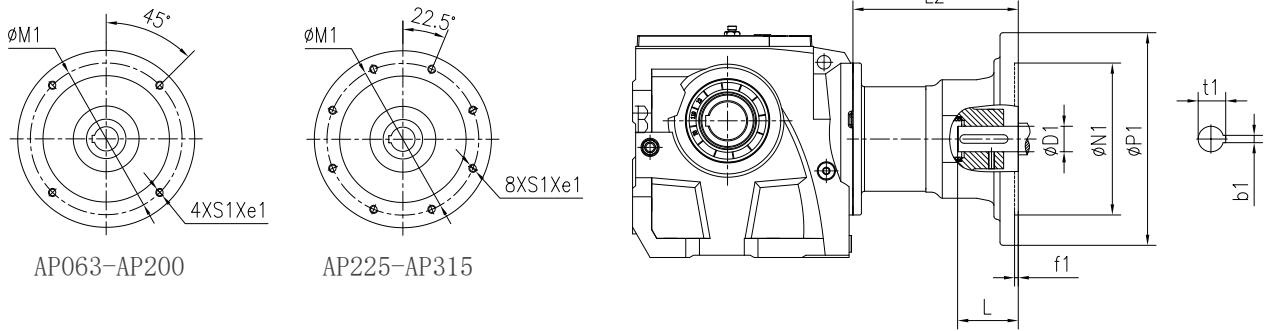
**7.1 S系列AP输入法兰
外形尺寸图表**

7 Input Flange and Input Shaft

**7.1 S series dimensions of AP
input flange**



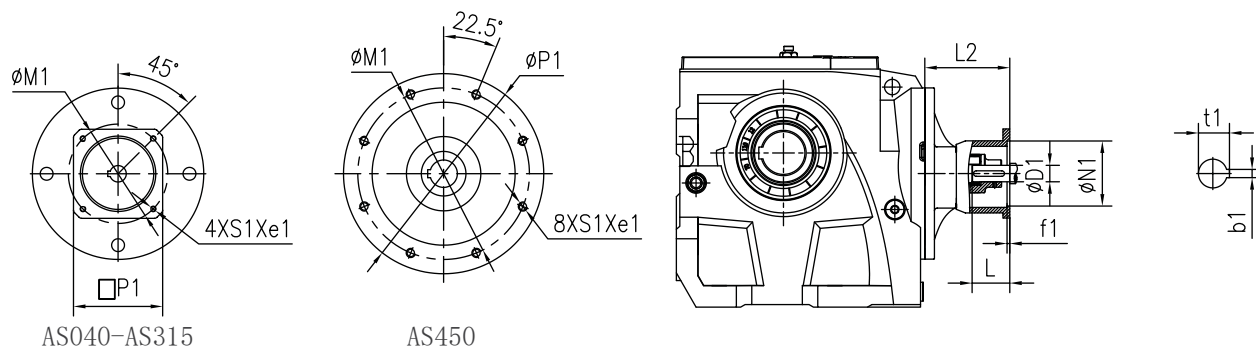
规格 Size	法兰 型号 Flange	适用 速比 范围 Range of Ratio	e1	D1	N1	M1	P1	f1	b1	t1	L	S1	L2	重量 (kg) Weight (kg)
S203	AP063	7.1-180	14	11H7	95H7	115	140	4	4	12.8	23	M8	59	4.8
	AP071	7.1-100	14	14H7	110H7	130	160	4	5	16.3	30	M8	59	4.8
	AP080	7.1-35.5	18	19H7	130H7	165	200	4	6	21.8	40	M10	74	7.6
S204	AP063	7.1-224	14	11H7	95H7	115	140	4	4	12.8	23	M8	59	4.8
	AP071	7.1-224	14	14H7	110H7	130	160	4	5	16.3	30	M8	59	4.8
	AP080	7.1-90	18	19H7	130H7	165	200	4	6	21.8	40	M10	74	7.6
S205	AP063	8-224	14	11H7	95H7	115	140	4	4	12.8	23	M8	61	5.1
	AP071	8-224	14	14H7	110H7	130	160	4	5	16.3	30	M8	61	5.1
	AP080	8-180	18	19H7	130H7	165	200	4	6	21.8	40	M10	76	8.6
	AP090	8-80	18	24H7	130H7	165	200	4	8	27.3	50	M10	81	9.2
	AP100	8-25	28	28H7	180H7	215	250	5	8	31.3	60	M12	191	14.1
S206	AP063	7.1-315	14	11H7	95H7	115	140	4	4	12.8	23	M8	61	5.1
	AP071	7.1-315	14	14H7	110H7	130	160	4	5	16.3	30	M8	61	5.1
	AP080	7.1-280	18	19H7	130H7	165	200	4	6	21.8	40	M10	76	8.6
	AP090	7.1-140	18	24H7	130H7	165	200	4	8	27.3	50	M10	81	9.2
	AP100	7.1-71	28	28H7	180H7	215	250	5	8	31.3	60	M12	191	14.1
	AP112	7.1-25	28	28H7	180H7	215	250	5	8	31.3	60	M12	191	14.1
S207	AP071	8-355	14	14H7	110H7	130	160	4	5	16.3	30	M8	53	6.7
	AP080	8-355	18	19H7	130H7	165	200	4	6	21.8	40	M10	68	10.3
	AP090	8-250	18	24H7	130H7	165	200	4	8	27.3	50	M10	73	11.1
	AP100	8-200	28	28H7	180H7	215	250	5	8	31.3	60	M12	181	15.5
	AP112	8-80	28	28H7	180H7	215	250	5	8	31.3	60	M12	181	15.5
	AP132	8-40	28	38H7	230H7	265	300	5	10	41.3	80	M12	210	22.3



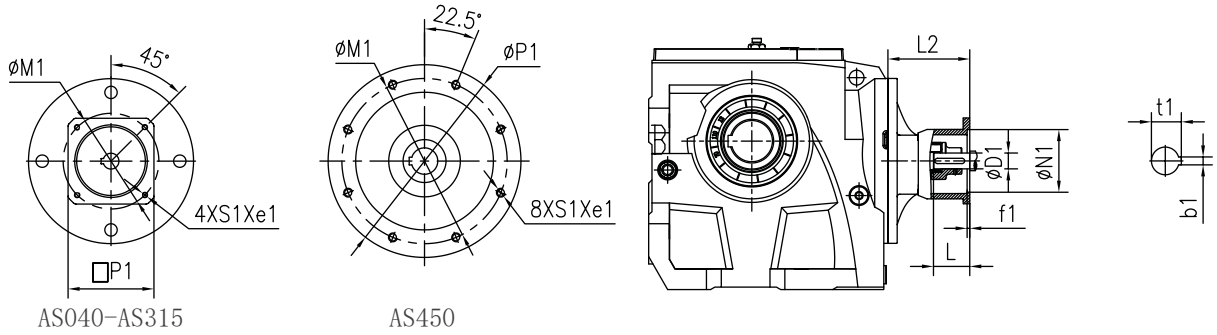
规格 Size	法兰型号 Flange	适用 Range of 速比 范围 Ratio	e1	D1	N1	M1	P1	f1	b1	t1	L	S1	L2	重量 Weight (kg)
S208	AP080	180-500	18	19H7	130H7	165	200	4	6	21.8	40	M10	65	10.4
	AP090	10-315	18	24H7	130H7	165	200	4	8	27.3	50	M10	66	12.1
	AP100	10-315	28	28H7	180H7	215	250	5	8	31.3	60	M12	171	18.2
	AP112	10-180	28	28H7	180H7	215	250	5	8	31.3	60	M12	171	18.2
	AP132	10-100	28	38H7	230H7	265	300	5	10	41.3	80	M12	203	24.9
	AP160	10-31.5	40	42H7	250H7	300	350	6	12	45.3	110	M16	272	46.4
S209	AP090	18-315	18	24H7	130H7	165	200	4	8	27.3	50	M10	61	14.7
	AP100	18-315	28	28H7	180H7	215	250	5	8	31.3	60	M12	172	21.5
	AP112	18-315	28	28H7	180H7	215	250	5	8	31.3	60	M12	172	21.5
	AP132	18-160	28	38H7	230H7	265	300	5	10	41.3	80	M12	202	28.3
	AP160	18-90	40	42H7	250H7	300	350	6	12	45.3	110	M16	270	49.9
	AP180	18-40	40	48H7	250H7	300	350	6	14	51.8	110	M16	270	49.9
S210	AP100	18-400	28	28H7	180H7	215	250	5	8	31.3	60	M12	162	25.6
	AP112	18-400	28	28H7	180H7	215	250	5	8	31.3	60	M12	162	25.6
	AP132	18-224	28	38H7	230H7	265	300	5	10	41.3	80	M12	189	33.7
	AP160	18-160	40	42H7	250H7	300	350	6	12	45.3	110	M16	257	52.3
	AP180	18-71	40	48H7	250H7	300	350	6	14	51.8	110	M16	257	52.3
	AP200	18-35.5	40	55H7	300H7	350	400	6	16	59.3	110	M16	327	77.4
S212	AP132	18-250	28	38H7	230H7	265	300	5	10	41.3	80	M12	175	46.4
	AP160	18-250	40	42H7	250H7	300	350	6	12	45.3	110	M16	243	66.9
	AP180	18-160	40	48H7	250H7	300	350	6	14	51.8	110	M16	243	66.9
	AP200	18-80	40	55H7	300H7	350	400	6	16	59.3	110	M16	316	89.8
	AP225	18-63	30	60H7	350H7	400	450	6	18	64.4	140	M16	343	97.5
	AP250	18-35.5	32	65H7	450H7	500	550	7	18	69.4	140	M16	361	131.3

7.2 S系列AS输入法兰 外形尺寸图表

7.2 S series dimensions of AS input flange



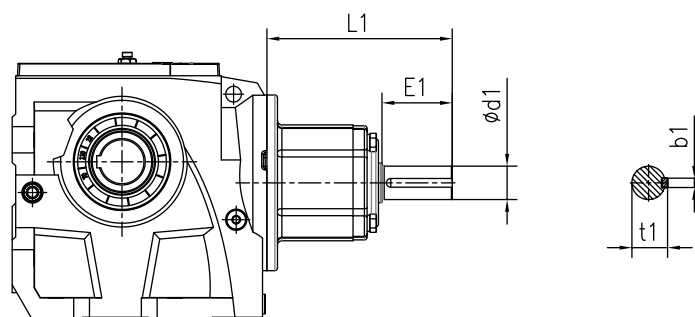
规格 Size	法兰型号 Flange	适用速比范围 Range of Ratio	e1	D1	N1	M1	P1	f1	b1	t1	L	S1	L2	重量 Weight (kg)
S203	AS040	7.1-180	4	8H7	30H7	46	78	4	2	9	25	M4	65	2.5
	AS055	7.1-180	4	9H7	40H7	63	78	4	3	10.4	25	M5	65	2.5
	AS060	7.1-180	10	14H7	50H7	70	60	4	5	16.3	30	M5	114	3.2
	AS070	7.1-180	10	14H7	60H7	75	70	4	5	16.3	30	M5	114	3.3
	AS080	7.1-180	10	19H7	70H7	90	80	4	6	21.8	35	M6	120	3.4
	AS090	7.1-180	10	19H7	80H7	100	90	4	6	21.8	40	M6	125	3.6
S204	AS040	7.1-224	4	8H7	30H7	46	78	4	2	9	25	M4	65	2.5
	AS055	7.1-224	4	9H7	40H7	63	78	4	3	10.4	25	M5	65	2.5
	AS060	7.1-224	10	14H7	50H7	70	60	4	5	16.3	30	M5	114	3.2
	AS070	7.1-224	10	14H7	60H7	75	70	4	5	16.3	30	M5	114	3.3
	AS080	7.1-224	10	19H7	70H7	90	80	4	6	21.8	35	M6	120	3.4
	AS090	7.1-224	10	19H7	80H7	100	90	4	6	21.8	40	M6	125	3.6
	AS100	7.1-125	14	19H7	95H7	115	100	4	6	21.8	45	M8	122	3.9
	AS125	7.1-125	15	24H7	110H7	130	130	5	8	27	50	M8	133	4.9
S205	AS060	8-224	10	14H7	50H7	70	60	4	5	16.3	30	M5	116	4.1
	AS070	8-224	10	14H7	60H7	75	70	4	5	16.3	30	M5	116	4.2
	AS080	8-224	10	19H7	70H7	90	80	4	6	21.8	35	M6	122	4.3
	AS090	8-224	10	19H7	80H7	100	90	4	6	21.8	40	M6	127	4.5
	AS100	8-180	14	19H7	95H7	115	100	4	6	21.8	45	M8	124	4.8
	AS125	8-180	15	24H7	110H7	130	130	5	8	27	50	M8	135	5.8
	AS140	8-180	15	24H7	110H7	145	130	5.5	8	27	55	M8	135	5.7
	AS160	8-180	15	32H7	130H7	165	155	5	10	35.3	60	M10	190	9.9
S206	AS060	7.1-315	10	14H7	50H7	70	60	4	5	16.3	30	M5	116	4.1
	AS070	7.1-315	10	14H7	60H7	75	70	4	5	16.3	30	M5	116	4.2
	AS080	7.1-315	10	19H7	70H7	90	80	4	6	21.8	35	M6	122	4.3
	AS090	7.1-315	10	19H7	80H7	100	90	4	6	21.8	40	M6	127	4.5
	AS100	7.1-200	14	19H7	95H7	115	100	4	6	21.8	45	M8	124	4.8
	AS125	7.1-200	15	24H7	110H7	130	130	5	8	27	50	M8	135	5.8
	AS140	7.1-200	15	24H7	110H7	145	130	5.5	8	27	55	M8	135	5.7
	AS160	7.1-200	15	32H7	130H7	165	155	5	10	35.3	60	M10	190	9.9



规格 Size	法兰 Flange 型号	适用 Range 速比 of 范围 Ratio	e1	D1	N1	M1	P1	f1	b1	t1	L	S1	L2	重量 Weight (kg)
S207	AS060	8-355	10	14H7	50H7	70	60	4	5	16.3	30	M5	108	5.6
	AS070	8-355	10	14H7	60H7	75	70	4	5	16.3	30	M5	108	5.7
	AS080	8-355	10	19H7	70H7	90	80	4	6	21.8	35	M6	114	5.8
	AS090	8-355	10	19H7	80H7	100	90	4	6	21.8	40	M6	119	6
	AS100	8-250	14	19H7	95H7	115	100	4	6	21.8	45	M8	116	6.3
	AS125	8-250	15	24H7	110H7	130	130	5	8	27	50	M8	127	7.3
	AS140	8-250	15	24H7	110H7	145	130	5.5	8	27	55	M8	127	7.2
	AS160	8-250	15	32H7	130H7	165	155	5	10	35.3	60	M10	180	11.3
	AS180	8-40	16	35H7	114.3H7	200	180	7	10	38.3	80	M12	210	16.7
AS190	8-40	18	38H7	180H7	215	190	5	10	41.3	80	M12	210	17.1	
AS240	8-40	28	38H7	230H7	265	240	5	10	41.3	80	M12	210	22.3	
S208	AS070	180-500	10	14H7	60H7	75	70	4	5	16.3	30	M5	105	8
	AS080	180-500	10	19H7	70H7	90	80	4	6	21.8	35	M6	111	8.1
	AS090	180-500	10	19H7	80H7	100	90	4	6	21.8	40	M6	116	8.3
	AS100	10-315	14	19H7	95H7	115	100	4	6	21.8	45	M8	113	8.6
	AS125	10-315	15	24H7	110H7	130	130	5	8	27	50	M8	124	9.6
	AS140	10-315	15	24H7	110H7	145	130	5.5	8	27	55	M8	124	9.5
	AS160	10-315	15	32H7	130H7	165	155	5	10	35.3	60	M10	170	14
	AS180	10-160	16	35H7	114.3H7	200	180	7	10	38.3	80	M12	203	19.3
	AS190	10-160	18	38H7	180H7	215	190	5	10	41.3	80	M12	203	19.7
AS240	10-160	28	38H7	230H7	265	240	5	10	41.3	80	M12	203	24.9	
AS260	10-160	40	48H7	250H7	300	260	6	14	51.8	110	M16	272	46.4	
S209	AS160	18-315	15	32H7	130H7	165	155	5	10	35.3	60	M10	171	17.3
	AS180	18-160	16	35H7	114.3H7	200	180	7	10	38.3	80	M12	202	22.7
	AS190	18-160	18	38H7	180H7	215	190	5	10	41.3	80	M12	202	23.1
	AS240	18-160	28	38H7	230H7	265	240	5	10	41.3	80	M12	202	28.3
	AS260	18-160	40	48H7	250H7	300	260	6	14	51.8	110	M16	271	49.9
S210	AS160	18-400	15	32H7	130H7	165	155	5	10	35.3	60	M10	161	21.4
	AS180	18-224	16	35H7	114.3H7	200	180	7	10	38.3	80	M12	189	28.1
	AS190	18-224	18	38H7	180H7	215	190	5	10	41.3	80	M12	189	28.5
	AS240	18-224	28	38H7	230H7	265	240	5	10	41.3	80	M12	189	33.7
	AS260	18-224	40	48H7	250H7	300	260	6	14	51.8	110	M16	258	52.3
	AS315	18-40	40	55H7	300H7	350	315	6	16	59.3	110	M16	327	77.4
S212	AS180	18-250	16	35H7	114.3H7	200	180	7	10	38.3	80	M12	175	40.8
	AS190	18-250	18	38H7	180H7	215	190	5	10	41.3	80	M12	175	41.2
	AS240	18-250	28	38H7	230H7	265	240	5	10	41.3	80	M12	175	46.4
	AS260	18-250	40	48H7	250H7	300	260	6	14	51.8	110	M16	244	66.9
	AS315	18-200	40	55H7	300H7	350	315	6	16	59.3	110	M16	316	89.8

7.3 S系列AE输入轴
外形尺寸图表

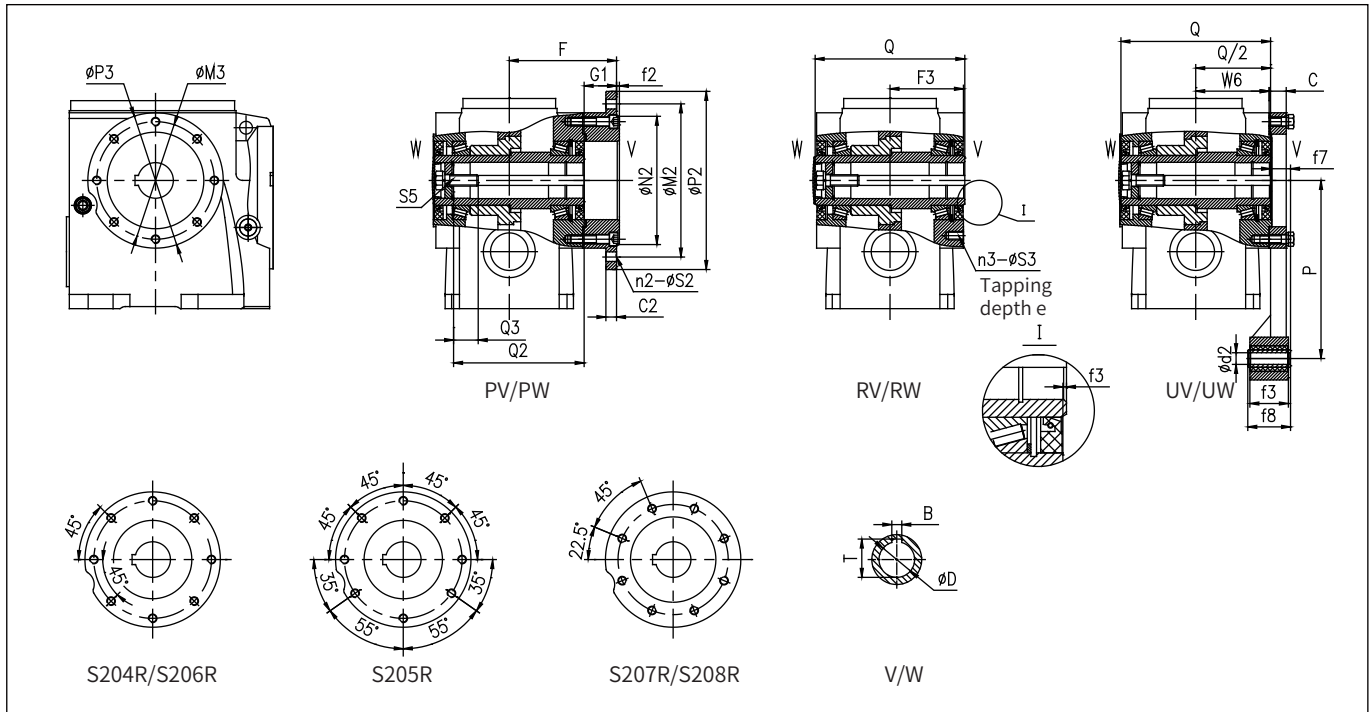
7.3 S series dimensions
of AE input shaft



规格 Size	输入轴 型号 Input Shaft	适用 功率 Range of 范围 Ratio	适用 速比 Range of 范围 Ratio	d1	E1	L1	b1	t1	重量 Weight (kg)
S203	AE2	0.12-0.75kW	7.1-180	19k6	40	117	6	21.5	2.5
S204	AE2	0.12-0.75kW	7.1-224	19k6	40	117	6	21.5	2.5
S205	AE2	0.12-0.75kW	8-224	19k6	40	119	6	21.5	3.4
	AE3	1.1-4kW	8-80	28k6	60	175	8	31	6.1
S206	AE2	0.12-0.75kW	7.1-315	19k6	40	119	6	21.5	3.4
	AE3	1.1-4kW	7.1-140	28k6	60	175	8	31	6.1
S207	AE2	0.12-0.75kW	71-355	19k6	40	111	6	21.5	4.9
	AE3	1.1-4kW	8-250	28k6	60	165	8	31	7.5
	AE4	5.5-7.5kW	8-40	38k6	80	211	10	41	10.5
S208	AE2	0.12-0.75kW	180-500	19k6	40	108	6	21.5	7.2
	AE3	1.1-4kW	10-315	28k6	60	155	8	31	10.2
	AE4	5.5-11kW	10-100	38k6	80	204	10	41	13.1
	AE5	15-22kW	10-25	42k6	110	266	12	45	23.3
S209	AE3	1.1-4kW	18-315	28k6	60	156	8	31	10.2
	AE4	5.5-11kW	18-160	38k6	80	203	10	41	13.1
	AE5	15-22kW	18-63	42k6	110	265	12	45	23.3
S210	AE3	1.1-4kW	18-400	28k6	60	146	8	31	17.6
	AE4	5.5-11kW	18-224	38k6	80	190	10	41	21.9
	AE5	15-22kW	18-100	42k6	110	252	12	45	29.2
	AE6	30-45KW	18-35.5	48k6	110	309	14	51.5	45.5
S212	AE4	5.5-11kW	18-250	38k6	80	176	10	41	34.6
	AE5	15-22kW	18-200	42k6	110	238	12	45	43.8
	AE6	30-45KW	18-80	48k6	110	298	14	51.5	57.9
	AE7	55-90KW	18-35.5	55m6	110	297	16	59	64.6

8 外形尺寸图(附表)

8 Dimensions(Supplement)



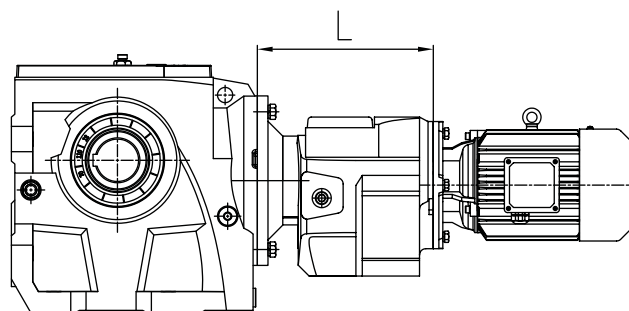
		Size	S204	S205	S206	S207	S208
安装形式 Mounting Mode	S2..P. (法兰式 安装) Flange- mount- ed	N2	110h7	/	130h7	180h7	250h7
		M2	130	/	165	215	300
		P2	160	/	200	250	350
		G1	25	/	42.5	45.5	52.5
		F	85	/	132.5	150.5	172.5
		f2	3.5	/	4	4	5
		C2	10	/	15	16	18
		n2	4	/	4	4	4
		S2	9	/	11	13.5	17.5
	S2..R. (轴装式 安装) Shaft- mount- ed	M3	115	102	130	155	180
		P3	132	132	150	190	250
		F3	58	73	88	103	118
		f3	2	2	2	2	2
		n3	8	8	8	8	8
		S3	M8	M8	M12	M12	M16
		e	17	17	18	21	28
	S2..U. (侧装 扭力臂 安装) Side installed torsion arm mount- ed	f7	18.5	16.5	17.5	28	23.5
		P	130	160	200	250	310
d2		10.4	10.4	10.4	16.4	16.4	
f3		31	31	31	54	54	
f8		36	36	36	60	60	
C		15	16	18	24	24	
输出形式 Output Mode	S2...V S2...W (平键 空心轴) Hollow shaft with paral- lel key	W6	58	73	88	103	118
		D	30H7	30H7	45H7	60H7	70H7
		Q	120	150	180	210	240
		Q/2	60	75	90	105	120
		S5	M10	M12	M16	M16	M20
		Q2	105	132	144	183	210
		Q3	17	25	30	35	36
		B	8	8	14	18	20
		T	33.3	33.3	48.8	64.4	74.9

注:
1.S2..R.表示轴装式安装,不含外接小法兰;
2.型号示例:S207PV代表法兰外径φ250、空心轴孔
径φ60H7的S207配置。

Note:
1.S2..R. represents shaft mounted installation,
excluding external small flange;
2.Model example: S207PV represents the configuration
of S207 with a flange outer diameter of φ250 and a
hollow shaft aperture of φ60H7.

9 组合型尺寸图表

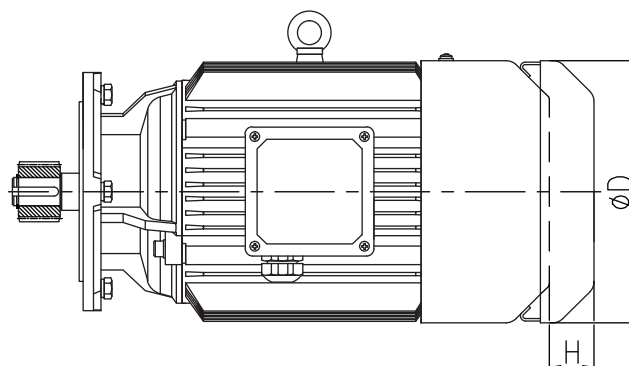
9 Combi-type Dimensions



型号 Type	S203/C201 S203/C301	S204/C201 S204/C301	S205/C203 S205/C303	S206/C203 S206/C303	S207/C203 S207/C303
L	134	134	170	170	162
适用马达 功率范围 (kW)	0.12-0.18	0.12-0.25	0.12-0.37	0.12-0.75	0.12-1.75
型号 型号	S208/C205 S208/C305	S209/C205 S209/C305	S210/C2 07 S210/C307	S212/C307	S212/C208 S212/C308
L	182	183	226	226	258
适用马达 功率范围 (kW)	0.12-3	0.12-4	0.12-5.5	0.12-1.5	1.1-11

10 马达防雨罩尺寸

**10 Motor Rainproof
Cover Dimensions**



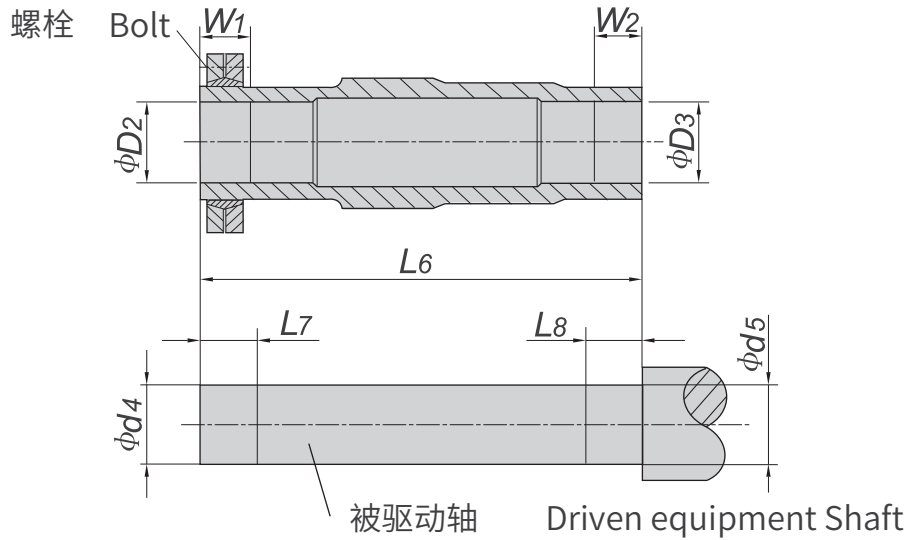
机座 Frame 号 Size	H63	H71	H80	H90	H100	H112	H132	H160	H180	H200	H225	H250	H280
D	124	139	159	176	199	220	259	314	356	398	446	485	547
H	25	30	30	35	40	40	40	60	60	70	70	80	80

11 被驱动轴推荐尺寸

11 Recommended Dimensions for Driven Equipment Shaft

11.1 锁紧盘

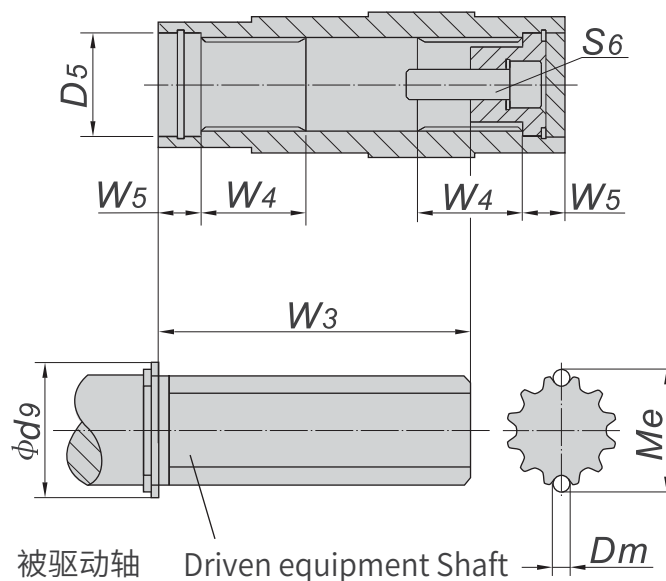
11.1 Shrink disk



规格 Size	D2	D3	d4	d5	L6	L7	L8	W1	W2	型号 Type	螺栓 Bolt	重量 Weight
S203	25H7	25H7	25h6	25h6	145	40	40	35	35	SP2-36×72	M6	0.6
S204	25H7	25H7	25h6	25h6	145	40	40	35	35	SP2-36×72	M6	0.6
S205	35H7	35H7	35h6	35h6	177	35	25	30	20	SP2-44×80	M6	0.8
S206	40H7	40H7	40h6	40h6	208	43	25	38	20	SP2-50×90	M6	0.8
S207	50H7	50H7	50h6	50h6	241	41	35	36	30	SP2-62×110	M6	1.3
S208	65H7	65H7	65h6	65h6	281	46	45	41	40	SP2-80×145	M8	1.9
S209	75H7	75H7	75h6	75h6	345	60	55	55	50	SP2-90×155	M8	3.3
S210	95H7	95H7	95h6	95h6	405	75	70	65	60	SP2-110×185	M10	5.9
S212	105H7	105H7	105h6	105h6	485	95	80	85	70	SP2-140×230	M12	10

11.2 花键轴

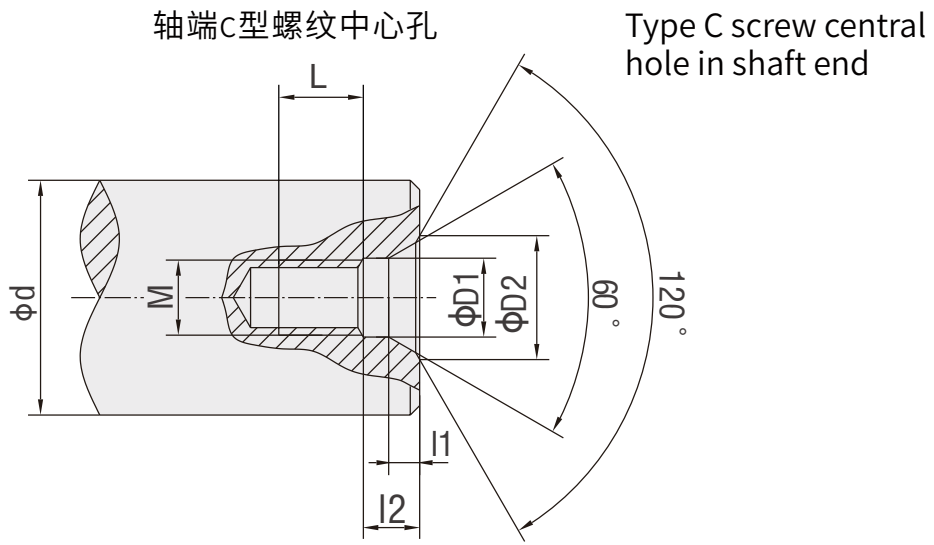
11.2 Involute spline



规格 Size	D5	Dm	d9	Me	W3	W4	W5	S6
S203	32	2.75	37	27.99	90	25	18	M10×30
S204	32	2.75	37	27.99	90	25	18	M10×30
S205	37	4	42	38.92	115	32	18	M10×30
S206	42	4	47	38.92	140	42	25	M16×40
S207	55	4	62	54.13	160	52	23	M16×50
S208	72	4	82	68.96	180	62	25	M20×60
S209	72	4	90	74.15	240	72	25	M20×60
S210	90	6	105	91	290	89	26	M20×60
S212	100	6	120	101.05	380	92	28	M24×60

12 轴端中心孔

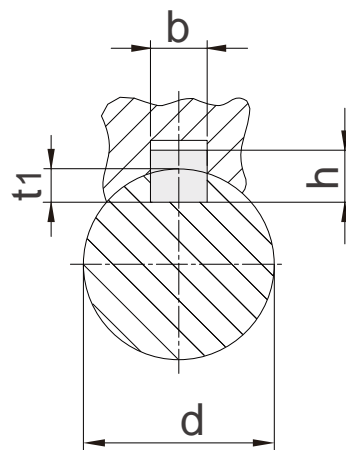
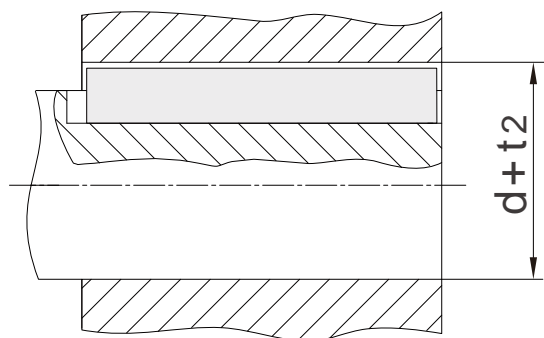
12 Shaft End Centre Hole



d	M	L	l2	l1	D1	D2
7 < d ≤ 10	M3	10	2.6	1.8	3.2	5.8
10 < d ≤ 13	M4	10	3.2	2.1	4.3	7.4
13 < d ≤ 16	M5	10	4	2.4	5.3	8.8
16 < d ≤ 21	M6	12	5	2.8	6.4	10.5
21 < d ≤ 24	M8	12	6	3.3	8.4	13.2
24 < d ≤ 30	M10	15	7.5	3.8	10.5	16.3
30 < d ≤ 38	M12	20	9.5	4.4	13	19.8
38 < d ≤ 50	M16	25	12	5.2	17	25.3
50 < d ≤ 85	M20	30	15	6.4	21	31.3
85 < d ≤ 130	M24	35	18	8	25	38
130 < d ≤ 225	M30	45	18	11	31	48

13 平键与键槽的尺寸

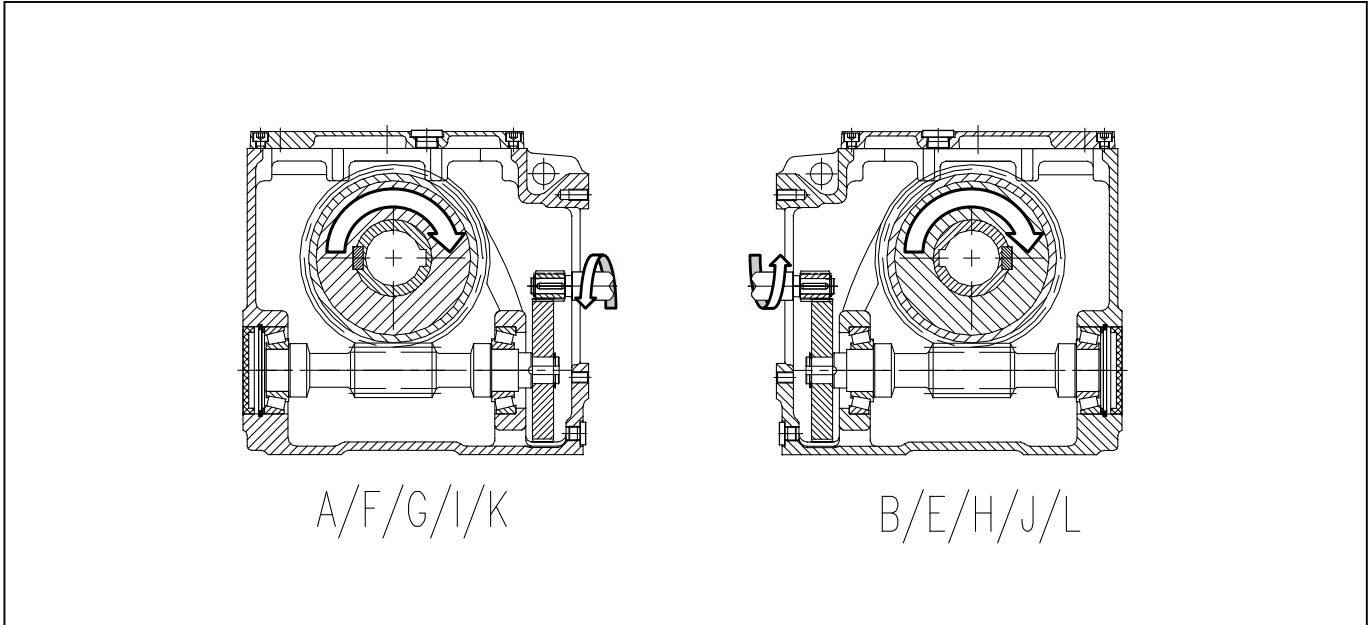
13 Dimension of Parallel Key and Keyway



d	b	h	t1	d + t2
8 < d ≤ 10	3	3	1.8	d + 1.4
10 < d ≤ 12	4	4	2.5	d + 1.8
12 < d ≤ 17	5	5	3	d + 2.3
17 < d ≤ 22	6	6	3.5	d + 2.8
22 < d ≤ 30	8	7	4	d + 3.3
30 < d ≤ 38	10	8	5	d + 3.3
38 < d ≤ 44	12	8	5	d + 3.3
44 < d ≤ 50	14	9	5.5	d + 3.8
50 < d ≤ 58	16	10	6	d + 4.3
58 < d ≤ 65	18	11	7	d + 4.4
65 < d ≤ 75	20	12	7.5	d + 4.9
75 < d ≤ 85	22	14	9	d + 5.4
85 < d ≤ 95	25	14	9	d + 5.4
95 < d ≤ 110	28	16	10	d + 6.4
110 < d ≤ 130	32	18	11	d + 7.4
130 < d ≤ 150	36	20	12	d + 8.4
150 < d ≤ 170	40	22	13	d + 9.4
170 < d ≤ 200	45	25	15	d + 10.4
200 < d ≤ 230	50	28	17	d + 11.4
230 < d ≤ 260	56	32	20	d + 12.4

**14 逆止器与齿轮
马达输出旋向对照表**

**14 Comparison table of
backstop and motor output
rotation direction**



逆止器选项和S 系列输出形式关系		Relationship of backstop & S series output mode	
输出形式 Output mode	输出轴旋向 (面向输出 轴端面) Output shaft rotational direction (when facing to it)	逆止器 Backstop	Backstop
A/D/G/I/K	CW	P	
	CCW	Q	
B/E/H/J/L	CW	Q	
	CCW	P	

注意: CW为顺时针, CCW为逆时针
P为逆止器顺时针, Q为逆止器逆时针

Attention: CW is clockwise while CCW is counter-clockwise.
P is clockwise for the backstop, Q is counter-clockwise.

15 润滑油

15 Oil

型号 Size	安装 方位 Mounting position	D1	D2	D3	D4	D5	D6
S203		0.3	0.5	0.6	0.7	0.5	0.5
S204		0.5	1.1	1.1	1.4	1.2	1.2
S205		0.6	1.4	1.2	1.9	1.7	1.7
S206		1.2	2.6	3.7	3.8	3.2	3.2
S207		2.3	5.0	7.0	7.8	5.9	5.9
S208		4.6	9.7	12.5	14.4	10.9	10.9
S209		8.9	18.0	22.6	28.3	21.6	21.6
S210		12.5	45.6	37.8	45.6	25.4	25.4
S212		22.0	80.4	63.6	80.4	42.8	42.8

随着技术迭代进步, 博能产品样本将会同步更新, 请见谅。
Along with the technology advancedet.,the product of
the manual of Boneng will be changed,please forgive.

博能产品集成图

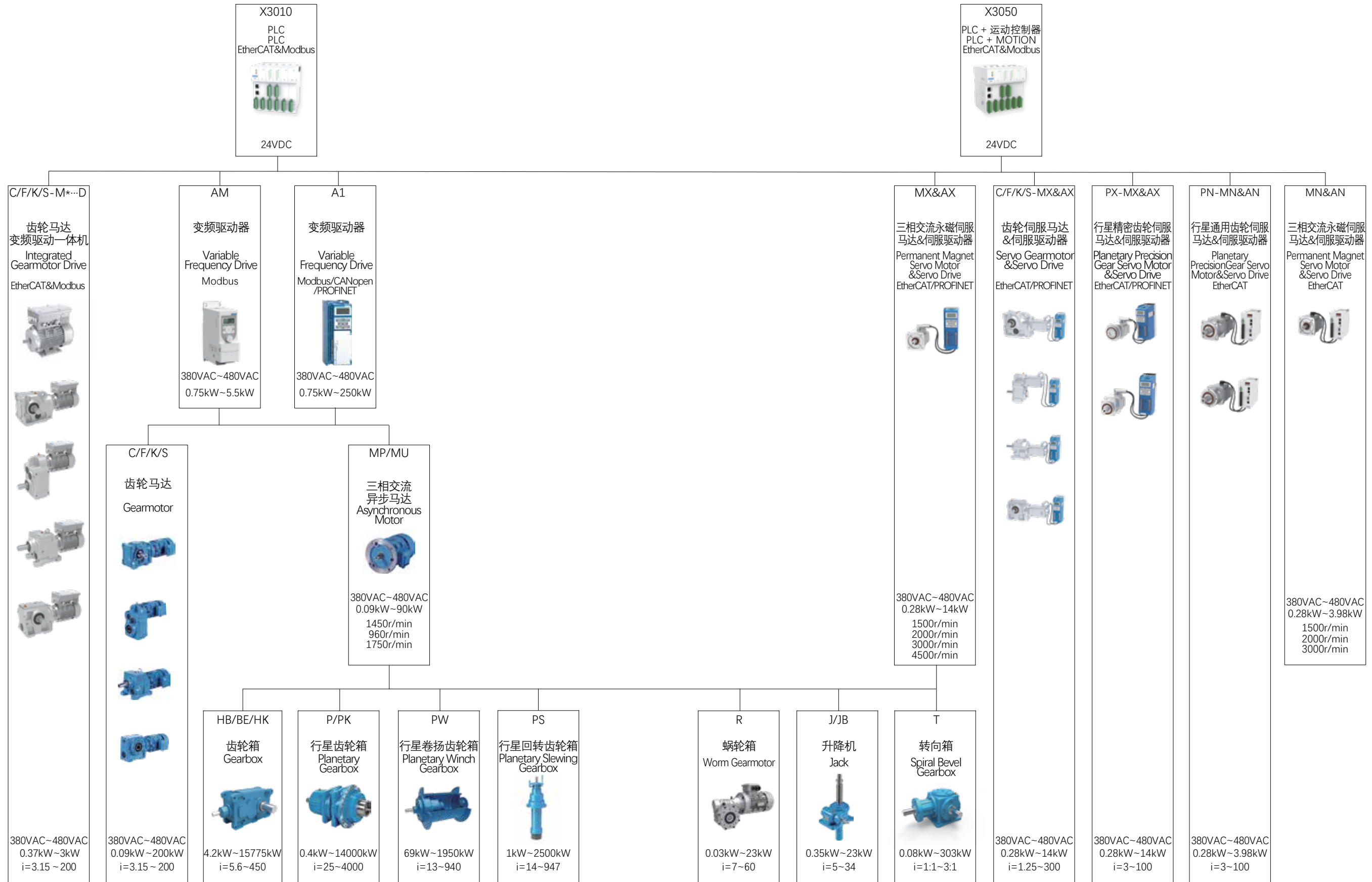
Boneng Product Integration Diagram

CONTROL
控制层

DRIVE
驱动层

MOTOR
马达层

GEAR
齿轮层



博能传动(沈阳)有限公司	BONENG TRANSMISSION(SHENYANG)CO.,LTD.
沈阳市沈北新区 太平洋工业城A区A73-6号 电话: 024-31271571	No. A73-6, Area A, Pacific Industrial City, Shenbei New District, Shenyang, Liaoning Province, China TEL: 024-31271571

博能传动(天津)有限公司	BONENG TRANSMISSION(TIANJIN)CO.,LTD.
天津市北辰区双海道6号 宏鹏工业园7号车间 电话: 022-26929556	7th Workshop, Hongpeng Industrial Park, No. 6 Shuanghai Road, Beichen District, Tianjin City,China TEL: 022-26929556

博能传动(潍坊)有限公司	BONENG TRANSMISSION(WEIFANG)CO.,LTD.
山东省潍坊市安丘市经济开发区 汶水路与昆仑大街交叉口往北 100米路东1号车间 电话: 0536-2141166	1st Workshop, Economic Development Zone, Anqiu, Weifang City, Shandong Province, China TEL: 0536-2141166

博能传动(开封)有限公司	BONENG TRANSMISSION(KAIFENG)CO.,LTD.
河南省开封市宋城路四大街11号 海神机械院内五号厂房 电话: 0371-23335238	5th Workshop, Haishen Machinery, No.11, Fourth Street, Songcheng Road,New District, Kaifeng City, Henan Province, China TEL: 0371-23335238

博能传动(长沙)有限公司	BONENG TRANSMISSION(CHANGSHA)CO.,LTD.
湖南省长沙市望城经济开发区 普瑞大道1288号 电话: 0731-88386958	No. 1288 Puri Avenue, Wangcheng Economic Development Zone, Changsha City, Hunan Province, China TEL: 0731-88386958

博能传动(苏州)有限公司	BONENG TRANSMISSION(SUZHOU)CO.,LTD.
江苏省苏州市相城区如元路100号 电话: 0512-66189662	No. 100, Ruyuan Road, Xiangcheng District, Suzhou, Jiangsu Province, China TEL: 0512-66189662

博能传动(美国)有限公司	BONENG TRANSMISSION(USA)LLC.
1250 E 222nd Euclid, OH 44117, United Staes TEL: 1-216-618-3099 TEL: 1-216-618-0138	1250 E 222nd Euclid, OH 44117, United Staes TEL: 1-216-618-3099 TEL: 1-216-618-0138

博能传动(印度)有限公司	BONENG TRANSMISSION(INDIA)PVT.LTD
Plot No. E-10/3, MIDC sinnar (Malegaon) Industrial Area, Nashik, 422123, Maharashtra, India. TEL:+91-11- 4507 6293 (DELHI) TEL:+91-22-2781 3385 (MUMBAI)	Plot No. E-10/3, MIDC sinnar (Malegaon) Industrial Area, Nashik, 422123, Maharashtra, India. TEL:+91-11- 4507 6293 (DELHI) TEL:+91-22-2781 3385 (MUMBAI)

